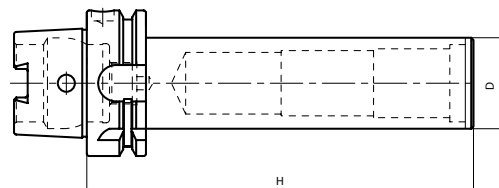


HSK ACCESSORIES



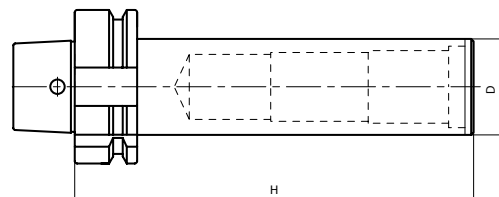
DIN 69893 A+C

HSK	Code N.	Description	D	H
32	217-71701	HSK32AH300D32BC	32	300
40	217-71702	HSK40AH300D32BC	32	300
50	217-71703	HSK50AH300D40BC	40	300
63	217-71704	HSK63AH380D40BC	40	380
100	217-71705	HSK100AH350D40BC	40	350



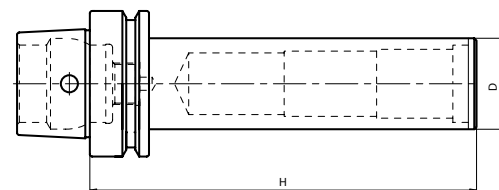
DIN 69893 B+D

HSK	Code N.	Description	D	H
40	217-71801	HSK40BH300D32BC	32	300
50	217-71802	HSK50BH300D40BC	40	300
63	217-71803	HSK63BH380D40BC	40	380
100	217-71804	HSK100BH400D40BC	40	400



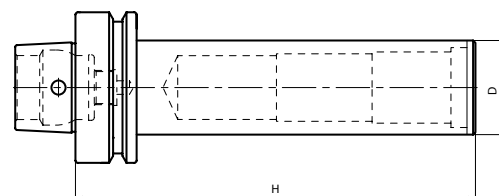
DIN 69893 E

HSK	Code N.	Description	D	H
40	217-77301	HSK40EH300D32BC	32	300
50	217-77302	HSK50EH300D40BC	40	300
63	217-77303	HSK63EH390D40BC	40	390

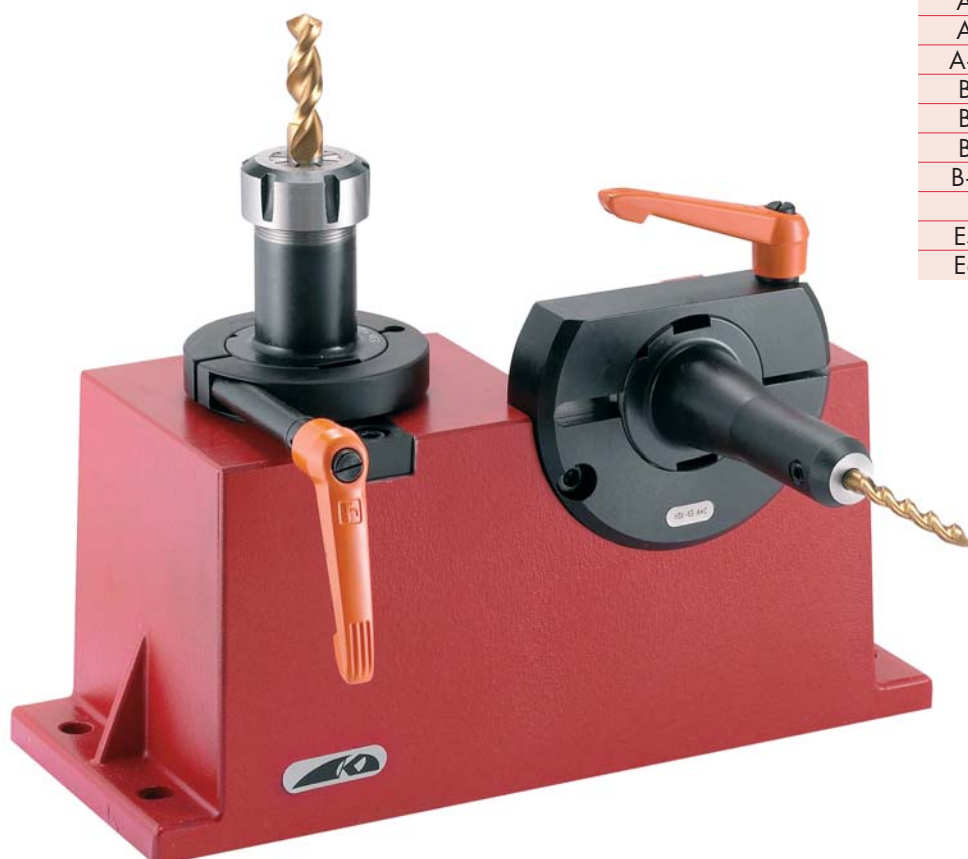


DIN 69893 F

HSK	Code N.	Description	D	H
50	217-77401	HSK50FH300D40BC	40	300
63	217-77402	HSK63FH380D40BC	40	380



IM HOLZKASTEN UND MIT PRÜFUNGSBESCHEINIGUNG
SUPPLIED IN WOODEN BOXES AND WITH TEST CERTIFICATE
FOURNIES EN BOÎTES DE BOIS ET AVEC CERTIFICAT DE CONTROLE
FORNITE IN CASSETTA DI LEGNO E CON CERTIFICATO DI COLLAUDO



HSK	Code N.
A+C 32	237-32150
A+C 40	237-32250
A+C 50	237-32350
A+C 63	237-32450
A+C 100	237-32650
B+D 40	237-32260
B+D 50	237-32360
B+D 63	237-32460
B+D 100	237-32660
E40	237-32270
E50,F50	237-32370
E63,F63	237-32470

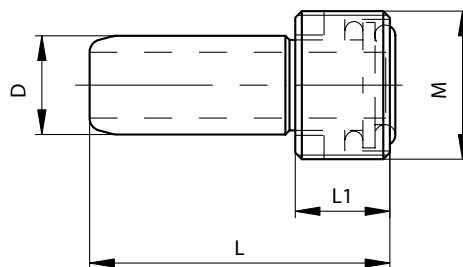
Dieses unkompliziertes System erlaubt die schnelle und sichere Montage und Demontage von Steilkegelaufnahmen in horizontaler und vertikaler Lage. Das Risiko der Werkzeugbeschädigung ist ausgeschlossen. Es eignet sich natürlich auch für modulare Steilkegelaufnahmen.

It is very useful for all assembly and disassembly operations of the tools on the toolholders with rationality, safety, and swiftness without any risk to damage casually the tool or the toolholder. It is a very simple system suitable for both monolithic and modular toolholders.

Il permet de effectuer toutes les operations de montage /d'assemblage/et de demontage des outils sur les mandrins avec rationalité, sureté, vitesse et sans aucun risque d'endommagement accidentel ou du mandrin ou d'outil. C'est un système qui vous offre la plus haute simplicité d'usage et c'est indiqué soit pour les mandrins monolithiques que modulaires.

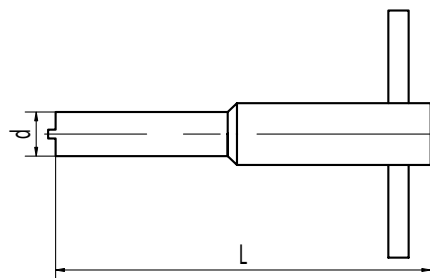
Consente di effettuare tutte le operazioni di montaggio e smontaggio degli utensili sui mandrini, con razionalità, sicurezza, rapidità e senza alcun rischio di danneggiare o il mandrino o l'utensile. È il sistema che offre la massima semplicità d'uso sia per i mandrini monolitici sia modulari.

**KÜHLMITTELÜBERGABESATZ
COOLANT SUPPLY UNIT
DISPOSITIF DE TRANSFERT DE LIQUIDE DE LUBRIFICATION
SET ADDUZIONE REFRIGERANTE**



HSK	Code N.	M	D	L	L1
A+C32,B+D40	832-01601	M10x1	6	26	5.5
A+C40,B+D50,E40,F50	832-01602	M12x1	8	29.3	7.5
A+C50,B+D63,E50,F63	832-01603	M16x1	10	33	9.5
A+C63,E63	832-01604	M18x1	12	36.6	11.5
B+D100	832-01605	M20x1.5	14	40	13.5
A+C100	832-01606	M24x1.5	16	44	15.5

**SCHLÜSSEL FÜR KÜHLMITTELÜBERGABESATZ
KEY FOR COOLANT SUPPLY UNIT
CLE POUR LE DISPOSITIF DE TRANSFERT DE LIQUIDE DE LUBRIFICATION
CHIAVE PER ADUTTORE**



HSK	Code N.	d	L
A+C32,B+D40	816-204001	13.5	90
A+C40,B+D50,E40,F50	816-204002	13.5	90
A+C50,B+D63,E50,F63	816-204003	15.5	95
A+C63,E63	816-204004	18	100
B+D100	816-204005	20	110
A+C100	816-204006	24	125