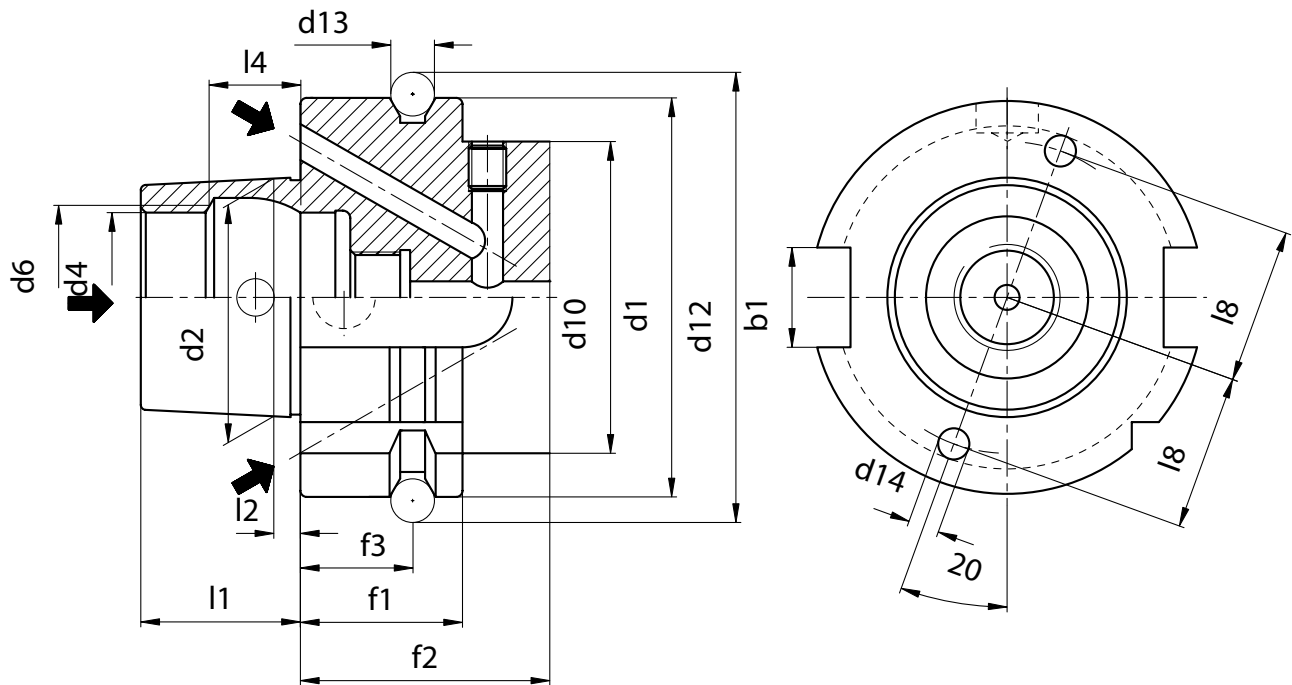




HSK DIN 69893 B+D

**TECHNISCHE DATEN DER STEILKEGELWERKZEUGE
TAPER SHANKS DATA SHEET
DONNES TECHNIQUES QUEUE D'OUTILS
DATI TECNICI CONI D'ATTACCO**



	HSK 40	HSK 50	HSK 63	HSK 100
b1	10	12	16	20
d1	40	50	63	100
d2	24	30	38	60
d4	17	21	26	42
d6	19	23	29	46
d10	34	42	53	88
d12	45	59,3	72,3	109.75
d13	4	7	7	7
d14	3	3,5	5	7
f1	20	26	26	29
f2	35	42	42	45
f3	16	18	18	20
l1	16	20	25	40
l2	3.2	4	5	8
l4	8.92	11,42	14,13	22.85
l8	16	20	25	40



Forma B

- Usato con centri di lavoro, tornitura e su macchine speciali per applicazioni pesanti.
- Flangia maggiorata.
- Adduzione refrigerante dal centro o dalla flangia.
- Coppia trasmessa con due chiavette sulla flangia.
- Foro di predisposizione al sistema di riconoscimento a norme DIN 69873 sull'esterno flangia.



Form B

- Anwendung für Bearbeitungszentren, Fräsmaschinen für Schwerzespannung, Drehmaschinen.
- Mit vergrößertem Bund.
- Dezentrale Kühlmittelzufuhr über den Bund oder zentrale über Kühlmittelrohr.
- Drehmomentübertragung über zwei Bundnuten.
- Bohrung für Datenträger DIN 69873 im Bund.



Form B

- Use on machining centres, milling machines for heavy-duty cutting, turning machines.
- Enlarged collar.
- Off-centre coolant supply through collar or central supply through coolant tube.
- Torque transmission via two slots on collar.
- Hole for data carrier DIN 69873 in collar.

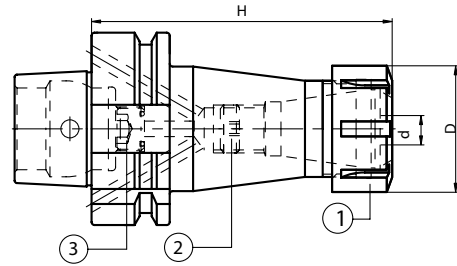


Forme B

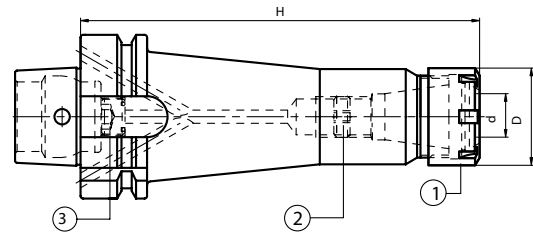
- Utilisation sur les centres d'usinage, les fraiseuses, pour usinage difficile, les tours.
- Avec épaulement agrandi.
- Alimentation décentralisée du liquide de lubrification par l'épaulement ou centrale par tube d'arrosage.
- Transmission du couple par deux gorges.
- Perçage pour support de données DIN 69873 dans l'épaulement.

**SPANNZANGENFUTTER ER TYP
ER COLLET CHUCK
MANDRINS A PINCES TYPE ER
MANDRINI PORTAPINZA TIPO ER**

DIN 6499


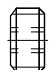


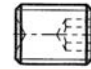
	HSK	Code N.	Description	H	d	D	ER
STANDARD	40	214-31829	HSK40BH80ER16M	80	0,5÷10	22	16M
	40	214-31830	HSK40BH80ER25M	80	1÷16	35	25M
	50	214-31819	HSK50BH100ER16M	100	0,5÷10	22	16M
	50	214-31802	HSK50BH100ER25	100	1÷16	42	25
	50	214-31820	HSK50BH100ER32	100	2÷20	50	32
	63	214-31821	HSK63BH100ER16M	100	0,5÷10	22	16M
	63	214-31805	HSK63BH100ER25	100	1÷16	42	25
	63	214-31822	HSK63BH120ER32	120	2÷20	50	32
	63	214-31823	HSK63BH130ER40	130	3÷30	63	40
	100	214-31831	HSK100BH125ER32	125	2÷20	50	32
	100	214-31832	HSK100BH130ER40	130	3÷30	63	40



	HSK	Code N.	Description	H	d	D	ER
EXTENDED	40	214-31833	HSK40BH130ER16M	130	0,5÷10	22	16M
	50	214-31824	HSK50BH150ER16M	150	0,5÷10	22	16M
	50	214-31826	HSK50BH150ER25M	150	1÷16	35	25M
	63	214-31827	HSK63BH160ER16M	160	0,5÷10	22	16M
	63	214-31828	HSK63BH160ER25M	160	1÷16	35	25M
	63	214-31815	HSK63BH160ER32	160	2÷20	50	32

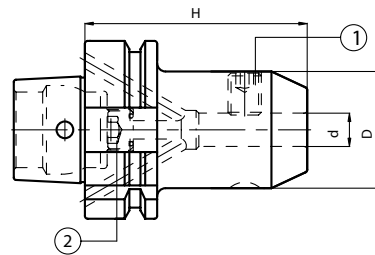
Ersatzteile / Spare parts / Pieces detachees / Componenti

ER	Nut	Stop screw
		
16M	812-203043	811-303119
25M	812-203045	811-303121
25	812-203016	811-303121
32	812-203017	811-303118
40	812-203018	811-303122

HSK	Screw
	
40	811-302049
50	811-302050
63	811-302051
100	811-302053

ZYLINDERSCHAFTAUFNAHME WELDON
 END MILL HOLDERS WELDON
 MANDRINS POUR OUTIL TYPE WELDON
 MANDRINI PORTAFRESE TIPO WELDON


DIN 1835/B



HSK	Code N.	Description	H	d	D
40	213-11836	HSK40BH60WE06	60	6	25
40	213-11837	HSK40BH60WE08	60	8	28
40	213-11838	HSK40BH65WE10	65	10	35
40	213-11839	HSK40BH70WE12	70	12	42
40	213-11840	HSK40BH70WE14	70	14	44
40	213-11841	HSK40BH70WE16	70	16	48
50	213-11801	HSK50BH65WE06	65	6	25
50	213-11802	HSK50BH65WE08	65	8	28
50	213-11803	HSK50BH70WE10	70	10	35
50	213-11804	HSK50BH80WE12	80	12	42
50	213-11805	HSK50BH80WE14	80	14	44
50	213-11806	HSK50BH80WE16	80	16	48
50	213-11854	HSK50BH80WE18	80	18	50
50	213-11825	HSK50BH85WE20	85	20	52
63	213-11826	HSK63BH75WE06	75	6	25
63	213-11827	HSK63BH75WE08	75	8	28
63	213-11828	HSK63BH75WE10	75	10	35
63	213-11810	HSK63BH80WE12	80	12	42
63	213-11811	HSK63BH80WE14	80	14	44
63	213-11812	HSK63BH80WE16	80	16	48
63	213-11813	HSK63BH80WE18	80	18	50
63	213-11814	HSK63BH85WE20	85	20	52
63	213-11829	HSK63BH110WE25	110	25	65
63	213-11830	HSK63BH110WE32	110	32	72
100	213-11842	HSK100BH95WE06	95	6	25
100	213-11843	HSK100BH95WE08	95	8	28
100	213-11844	HSK100BH95WE10	95	10	35
100	213-11845	HSK100BH100WE12	100	12	42
100	213-11846	HSK100BH100WE14	100	14	44
100	213-11847	HSK100BH100WE16	100	16	48
100	213-11848	HSK100BH100WE18	100	18	50
100	213-11849	HSK100BH110WE20	110	20	52
100	213-11850	HSK100BH125WE25	125	25	65
100	213-11851	HSK100BH130WE32	130	32	72

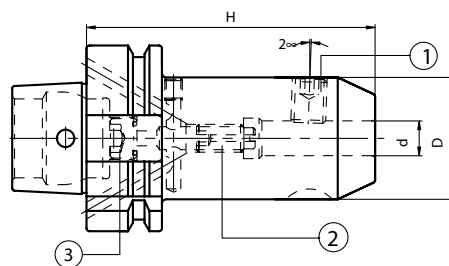
Ersatzteile / Spare parts / Pieces detachees / Componenti

d	Locking screw	Quantity
		
6	811-106001	1
8	811-106002	1
10	811-106004	1
12;14	811-106005	1
16;18	811-106006	1
20	811-106007	1
25	811-106008	2
32	811-106009	2

HSK	Screw
	
40	811-302049
50	811-302050
63	811-302051
100	811-302053


ZYLINDERSCHAFTAUFNAHME WHISTLE-NOTCH
 END MILL HOLDERS WHISTLE-NOTCH
 MANDRINS POUR OUTIL TYPE WHISTLE-NOTCH
 MANDRINI PORTAFRESE TIPO WHISTLE-NOTCH

DIN 1835/E



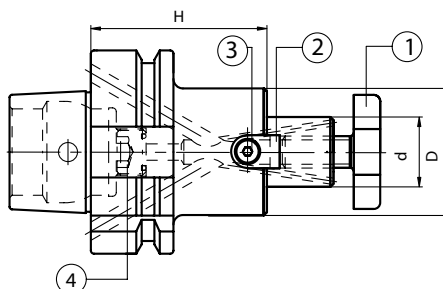
HSK	Code N.	Description	H	d	D
40	213-31825	HSK40BH85WN06	85	6	25
40	213-31826	HSK40BH85WN08	85	8	28
40	213-31827	HSK40BH85WN10	85	10	35
40	213-31828	HSK40BH90WN12	90	12	42
40	213-31840	HSK40BH90WN14	90	14	44
40	213-31829	HSK40BH100WN16	100	16	48
50	213-31801	HSK50BH90WN06	90	6	25
50	213-31802	HSK50BH90WN08	90	8	28
50	213-31803	HSK50BH90WN10	90	10	35
50	213-31804	HSK50BH100WN12	100	12	42
50	213-31805	HSK50BH100WN14	100	14	44
50	213-31806	HSK50BH110WN16	110	16	48
50	213-31841	HSK50BH110WN18	110	18	50
50	213-31830	HSK50BH110WN20	110	20	52
63	213-31807	HSK63BH90WN06	90	6	25
63	213-31808	HSK63BH90WN08	90	8	28
63	213-31809	HSK63BH90WN10	90	10	35
63	213-31810	HSK63BH100WN12	100	12	42
63	213-31811	HSK63BH100WN14	100	14	44
63	213-31812	HSK63BH110WN16	110	16	48
63	213-31813	HSK63BH110WN18	110	18	50
63	213-31814	HSK63BH110WN20	110	20	52
63	213-31831	HSK63BH120WN25	120	25	65
63	213-31832	HSK63BH135WN32	135	32	72
100	213-31833	HSK100BH110WN10	110	10	35
100	213-31834	HSK100BH120WN12	120	12	42
100	213-31842	HSK100BH120WN14	120	14	44
100	213-31835	HSK100BH130WN16	130	16	48
100	213-31843	HSK100BH130WN18	130	18	50
100	213-31836	HSK100BH140WN20	140	20	52
100	213-31837	HSK100BH140WN25	140	25	65
100	213-31838	HSK100BH155WN32	155	32	72

Ersatzteile / Spare parts / Pieces detachees / Componenti

d	Locking screw	Quantity	Stop screw
			
6	811-106001	1	811-303043
8	811-106002	1	811-303081
10	811-106004	1	811-303089
B100/10	811-106004	1	811-303093
12;14	811-106005	1	811-303090
B100/12;14	811-106005	1	811-303094
16;18	811-106006	1	811-303091
20	811-106007	1	811-303091
25	811-106008	2	811-303092
32	811-106009	2	811-303092

HSK	Screw
	
40	811-302049
50	811-302050
63	811-302051
100	811-302053

AUFSTECKFRÄSDORNE FÜR FRÄSER MIT QUERNUT MIT KÜHLMITTELZUFUHR
FACE MILL HOLDERS-TENONS DRIVE WITH INTERNAL COOLANT SUPPLY
MANDRINS PORTE-FRAISE-ENTRAÎNEMENT PAR TENONS AVEC ARROSAGE INTERNE
MANDRINI PORTAFRESE A TRASCINAMENTO FISSO CON PASSAGGIO REFRIGERANTE **ISO 3937**



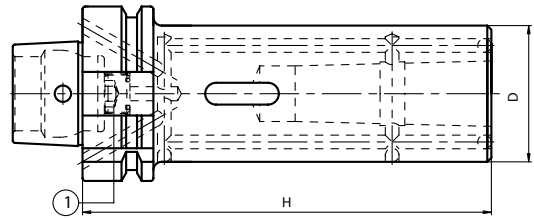
HSK	Code N.	Description	H	d	D
40	216-71808	HSK40BH45D16F-L	45	16	38
40	216-71809	HSK40BH50D22F-L	50	22	48
50	216-71801	HSK50BH45D16F-L	45	16	38
50	216-71802	HSK50BH55D22F-L	55	22	48
50	216-71803	HSK50BH55D27F-L	55	27	58
63	216-71804	HSK63BH55D16F-L	55	16	38
63	216-71805	HSK63BH55D22F-L	55	22	48
63	216-71806	HSK63BH55D27F-L	55	27	58
63	216-71807	HSK63BH60D32F-L	60	32	78
100	216-71810	HSK100BH60D22F-L	60	22	48
100	216-71811	HSK100BH60D27F-L	60	27	58
100	216-71812	HSK100BH65D32F-L	65	32	78
100	216-71813	HSK100BH70D40F-L	70	40	88

Ersatzteile / Spare parts / Pieces detachees / Componenti

d	Cross screw	Dog	Screw
16	811-107003	814-20228	811-101004
22	811-107004	814-20225	811-101011
27	811-107005	814-20227	811-101018
32	811-107006	814-20263	811-101029
40	811-107007	814-20271	811-101029

HSK	Screw
40	811-302049
50	811-302050
63	811-302051
100	811-302053

ZWISCHENHÜLSEN FÜR MORSEKEGEL MIT AUSTREIBBLAPPEN MIT KÜHLMITTEL ZUFUHR
MORSE TAPE ADAPTER FOR DRILLS WITH INTERNAL COOLANT SUPPLY
DOUILLES POUR CONE MORSE A TENON AVEC ARROSAGE INTERNE
MANDRINI PORTAPUNTE ATTACCO CONO MORSE CON PASSAGGIO REFRIGERANTE **DIN 228-2D**



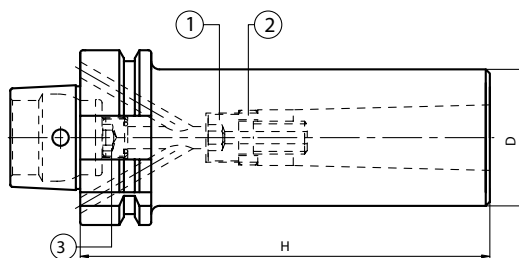
HSK	Code N.	Description	Morse	H	D
40	212-51817	HSK40BH110CM1P	1	110	40
40	212-51818	HSK40BH120CM2P	2	120	45
50	212-51801	HSK50BH115CM1P	1	115	40
50	212-51802	HSK50BH125CM2P	2	125	45
50	212-51815	HSK50BH150CM3P	3	150	50
63	212-51803	HSK63BH115CM1P	1	115	40
63	212-51804	HSK63BH125CM2P	2	125	45
63	212-51805	HSK63BH150CM3P	3	150	50
63	212-51816	HSK63BH175CM4P	4	175	60

Ersatzteile / Spare parts / Pieces detachees / Componenti

HSK	Screw
	①
40	811-302049
50	811-302050
63	811-302051

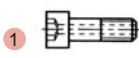

ZWISCHENHÜLSEN FÜR MORSEKEGEL MIT ANZUGSGEWINDE
MORSE TAPER ADAPTER WITH TREAD
DOUILLES POUR CONE MORSE AVEC TARAUDAGE
MANDRINI PORTAFRESE ATTACCO CONO MORSE


DIN 228-2 C



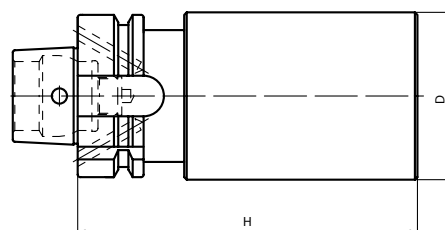
HSK	Code N.	Description	Morse	H	D
40	212-31811	HSK40BH105CM1F	1	105	25
40	212-31812	HSK40BH115CM2F	2	115	32
50	212-31801	HSK50BH110CM1F	1	110	25
50	212-31802	HSK50BH120CM2F	2	120	32
50	212-31809	HSK50BH150CM3F	3	150	40
63	212-31803	HSK63BH110CM1F	1	110	25
63	212-31804	HSK63BH120CM2F	2	120	32
63	212-31805	HSK63BH150CM3F	3	150	40
63	212-31810	HSK63BH170CM4F	4	170	48

Ersatzteile / Spare parts / Pieces detachees / Componenti

HSK/MORSE	Screw	Ring
		
40/1	811-401101	811-302037
40/2	811-401102	811-302031
50/1	811-401100	811-302037
50/2	811-401079	811-302031
50/3	811-401089	811-302032
63/1	811-401100	811-302037
63/2	811-401099	811-302031
63/3	811-401078	811-302032
63/4	811-401096	811-302036

HSK	Screw
	
40	811-302049
50	811-302050
63	811-302051

ROHLINGE
BLANK TOOLHOLDERS
EBAUCHE
MANDRINI SEMILAVORATI A STELO TENERO



HSK	Code N.	Description	H	D
40	217-11807	HSK40BH150D50SM	150	50
50	217-11801	HSK50BH150D50SM	150	50
50	217-11802	HSK50BH200D63SM	200	63
63	217-11803	HSK63BH200D63SM	200	63
63	217-11804	HSK63BH200D80SM	200	80