

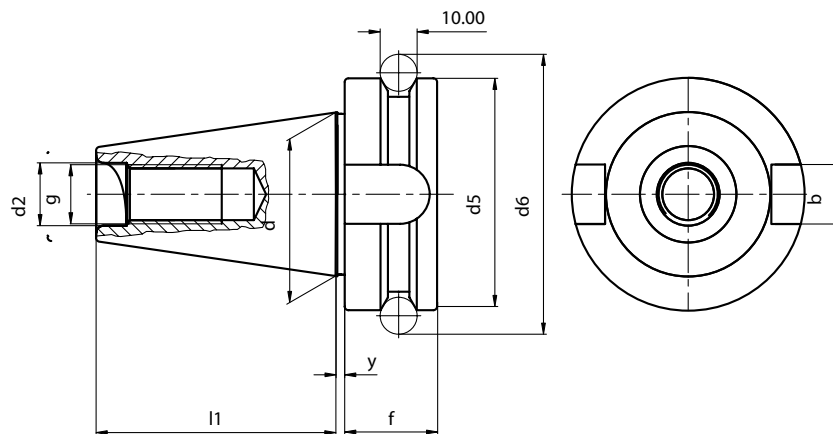


MAS 403 / BT A

MAS 403 / BT AD/ B

**TECHNISCHE DATEN DER STEILKEGELWERKZEUGE
TAPER SHANKS DATA SHEET
DONNES TECHNIQUES QUEUE D'OUTILS
DATI TECNICI CONI D'ATTACCO**

MAS 403/BT A

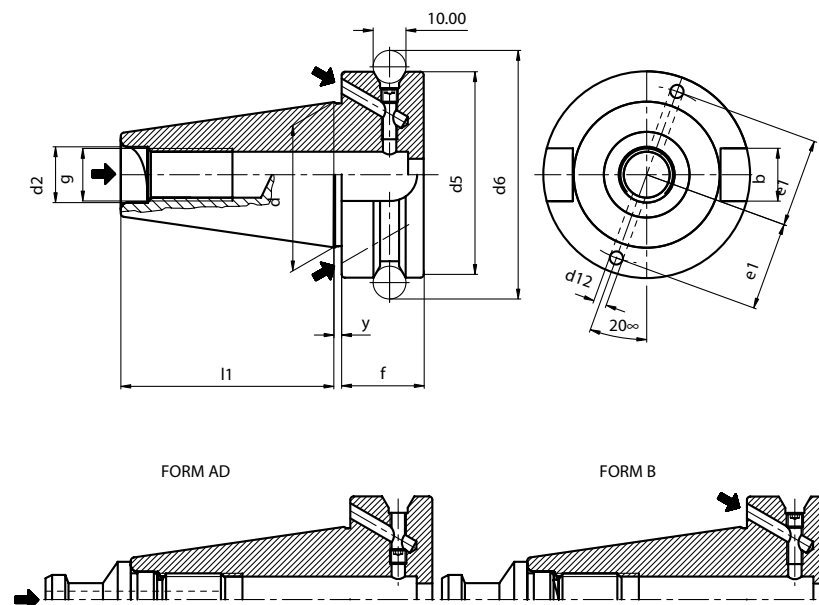


BT	d	l1	d2	g	y	d5	f	d6	b
30	31,75	48,4	13	M12	2	46	20	56,144	16,1
40	44,45	65,4	17	M16	2	63	25	75,68	16,1
50	69,85	101,8	25	M24	3	100	35	110,02	25,7

For coolant through the center of the toolholders with hollow retention knobs.
Il lubrificante passa dal centro del mandrino attraverso il tirante forato.

**TECHNISCHE DATEN DER STEILKEGELWERKZEUGE
TAPER SHANKS DATA SHEET
DONNES TECHNIQUES QUEUE D'OUTILS
DATI TECNICI CONI D'ATTACCO**

MAS 403 /BT AD/B



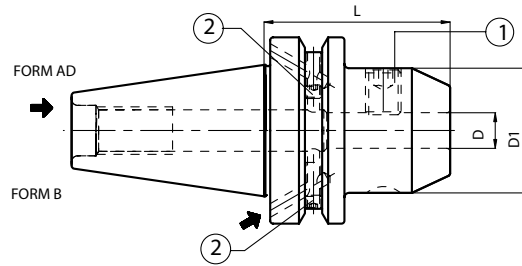
BT	d	l1	d2	g	y	d5	f	d6	d12	e1	b
40	44,45	65,4	17	M16	2	63	25	75,68	4	27	16,1
50	69,85	101,8	25	M24	3	100	35	110,02	5	42	25,7

For coolant through V-flange bores (B) or center of toolholders (AD). For central coolant, the V-flange channels are closed by socket screws.

Il lubrificante passa dai fori sulla flangia (B) oppure, chiudendo i fori con le apposite viti, dal centro del mandrino (AD).


ZYLINDERSCHAFTAUFNAHME WELDON
 END MILL HOLDERS WELDON
 MANDRINS POUR OUTIL TYPE WELDON
 MANDRINI PORTAFRESE TIPO WELDON

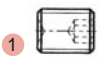
DIN 1835 B



Code N.	Description	ISO	D	L	D1
*263-11501	BT30H50WE06	30	6	50	25
*263-11502	BT30H50WE08	30	8	50	28
*263-11503	BT30H50WE10	30	10	50	35
*263-11504	BT30H55WE12	30	12	55	42
*263-11505	BT30H63WE16	30	16	63	48
*263-11506	BT30H70WE20	30	20	70	52
213-11413	BT40H50WE06 AD+B	40	6	50	25
213-11414	BT40H50WE08 AD+B	40	8	50	28
213-11415	BT40H63WE10 AD+B	40	10	63	35
213-11416	BT40H63WE12 AD+B	40	12	63	42
213-11417	BT40H63WE14 AD+B	40	14	63	44
213-11418	BT40H63WE16 AD+B	40	16	63	48
213-11419	BT40H63WE18 AD+B	40	18	63	50
213-11420	BT40H63WE20 AD+B	40	20	63	52
213-11421	BT40H90WE25 AD+B	40	25	90	65
213-11422	BT40H100WE32 AD+B	40	32	100	72
213-11465	BT40H105WE40 AD+B	40	40	105	80
213-11423	BT50H63WE06 AD+B	50	6	63	25
213-11424	BT50H63WE08 AD+B	50	8	63	28
213-11425	BT50H70WE10 AD+B	50	10	70	35
213-11426	BT50H80WE12 AD+B	50	12	80	42
213-11427	BT50H80WE14 AD+B	50	14	80	44
213-11428	BT50H80WE16 AD+B	50	16	80	48
213-11429	BT50H80WE18 AD+B	50	18	80	50
213-11430	BT50H80WE20 AD+B	50	20	80	52
213-11431	BT50H100WE25 AD+B	50	25	100	65
213-11432	BT50H105WE32 AD+B	50	32	105	72
213-11433	BT50H120WE40 AD+B	50	40	120	80
263-11425	BT50H125WE50 AD+B	50	50	125	100

Ersatzteile / Spare parts / Pieces detachees / Componenti

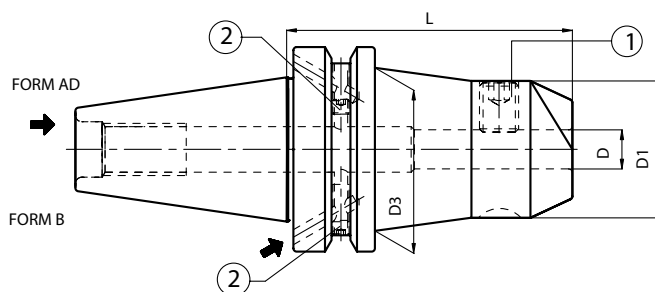
Tape	Screw	Quantity
		
ISO 40	811-103009	2
ISO 50	811-103009	2

D	Locking screw	Quantity
		
6	811-106001	1
8	811-106002	1
10	811-106004	1
12,14	811-106005	1
16,18	811-106006	1
20	811-106007	1
25	811-106008	2
32	811-106009	2
40	811-106009	2
50	811-106011	2

*Ausführung Form AD
 *Execution form AD
 *Forme AD
 *Forma AD

ZYLINDERSCHAFTAUFNAHME WELDON-LANG
END MILL HOLDERS WELDON-LONG PROJECTION TYPE
MANDRINS POUR OUTIL TYPE WELDON-SERIE LONGUE
MANDRINI PORTAFRESE TIPO WELDON-SERIE LUNGA

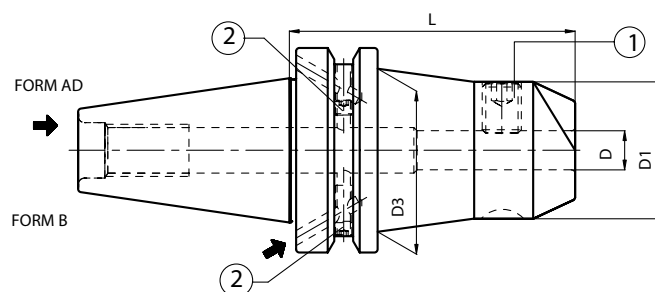
ISO 1835 B



	Code N.	Description	ISO	D	L	D1	D3
H100	213-11434	BT40H100WE06 AD+B	40	6	100	25	35
	213-11435	BT40H100WE08 AD+B	40	8	100	28	38
	213-11436	BT40H100WE10 AD+B	40	10	100	35	40
	213-11437	BT40H100WE12 AD+B	40	12	100	42	-
	213-11438	BT40H100WE14 AD+B	40	14	100	44	-
	213-11439	BT40H100WE16 AD+B	40	16	100	48	-
	213-11440	BT40H100WE18 AD+B	40	18	100	50	-
	213-11441	BT40H100WE20 AD+B	40	20	100	52	-
	213-11448	BT50H100WE06 AD+B	50	6	100	25	35
	213-11449	BT50H100WE08 AD+B	50	8	100	28	38
	213-11450	BT50H100WE10 AD+B	50	10	100	35	42
	213-11451	BT50H100WE12 AD+B	50	12	100	42	48
	213-11452	BT50H100WE14 AD+B	50	14	100	44	50
	213-11453	BT50H100WE16 AD+B	50	16	100	48	54
	213-11454	BT50H100WE18 AD+B	50	18	100	50	62
213-11455	BT50H100WE20 AD+B	50	20	100	52	66	
H160	213-11442	BT40H160WE06 AD+B	40	6	160	25	35
	213-11443	BT40H160WE08 AD+B	40	8	160	28	38
	213-11444	BT40H160WE10 AD+B	40	10	160	35	40
	213-11445	BT40H160WE12 AD+B	40	12	160	42	-
	213-11466	BT40H160WE14 AD+B	40	14	160	44	-
	213-11446	BT40H160WE16 AD+B	40	16	160	48	-
	213-11467	BT40H160WE18 AD+B	40	18	160	50	-
	213-11447	BT40H160WE20 AD+B	40	20	160	52	-
	213-11468	BT40H160WE25 AD+B	40	25	160	65	-
	213-11469	BT40H160WE32 AD+B	40	32	160	72	-
	213-11457	BT50H160WE06 AD+B	50	6	160	25	42
	213-11458	BT50H160WE08 AD+B	50	8	160	28	45
	213-11459	BT50H160WE10 AD+B	50	10	160	35	49
	213-11460	BT50H160WE12 AD+B	50	12	160	42	55
	213-11470	BT50H160WE14 AD+B	50	14	160	44	57
	213-11461	BT50H160WE16 AD+B	50	16	160	48	60
	213-11471	BT50H160WE18 AD+B	50	18	160	50	63
	213-11462	BT50H160WE20 AD+B	50	20	160	52	69
213-11472	BT50H160WE25 AD+B	50	25	160	65	72	
213-11473	BT50H160WE32 AD+B	50	32	160	72	-	


ZYLINDERSCHAFTAUFNAHME WELDON-LANG
 END MILL HOLDERS WELDON-LONG PROJECTION TYPE
 MANDRINS POUR OUTIL TYPE WELDON-SERIE LONGUE
 MANDRINI PORTAFRESE TIPO WELDON-SERIE LUNGA

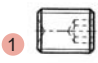
DIN 1835 B



Code N.	Description	ISO	D	L	D1	D3
213-11474	BT40H200WE06 AD+B	40	6	200	25	38
213-11475	BT40H200WE08 AD+B	40	8	200	28	41
213-11476	BT40H200WE10 AD+B	40	10	200	35	43
213-11477	BT40H200WE12 AD+B	40	12	200	42	48
213-11478	BT40H200WE14 AD+B	40	14	200	44	48
213-11479	BT40H200WE16 AD+B	40	16	200	48	-
213-11480	BT40H200WE18 AD+B	40	18	200	50	-
213-11481	BT40H200WE20 AD+B	40	20	200	52	-
213-11482	BT40H200WE25 AD+B	40	25	200	65	-
213-11483	BT40H200WE32 AD+B	40	32	200	72	-
213-11484	BT50H200WE06 AD+B	50	6	200	25	42
213-11485	BT50H200WE08 AD+B	50	8	200	28	45
213-11486	BT50H200WE10 AD+B	50	10	200	35	49
213-11487	BT50H200WE12 AD+B	50	12	200	42	55
213-11488	BT50H200WE14 AD+B	50	14	200	44	57
213-11489	BT50H200WE16 AD+B	50	16	200	48	60
213-11490	BT50H200WE18 AD+B	50	18	200	50	63
213-11491	BT50H200WE20 AD+B	50	20	200	52	69
213-11492	BT50H200WE25 AD+B	50	25	200	65	72
213-11463	BT50H200WE32 AD+B	50	32	200	72	-

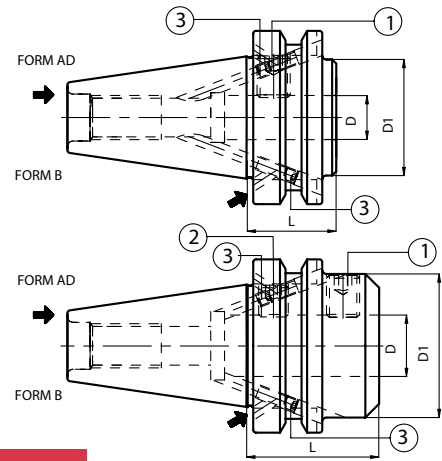
Ersatzteile / Spare parts / Pieces detachees / Componenti

Type	Screw	Quantity
		
ISO 40	811-103009	2
ISO 50	811-103009	2

D	Locking screw	Quantity
		
6	811-106001	1
8	811-106002	1
10	811-106004	1
12,14	811-106005	1
16,18	811-106006	1
20	811-106007	1
25	811-106008	2
32	811-106009	2


KURZE ZYLINDERSCHAFTAUFNAHME WELDON
SHORT END MILL WELDON HOLDERS
MANDRINS COURTS PORTE-FRAISE TYPE WELDON
MANDRINI CORTI PORTAFRESE TIPO WELDON



DIN 1835 B



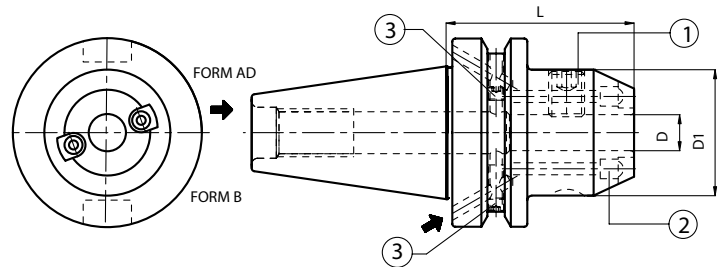
Code N.	Description	ISO	D	L	D1
213-11493	BT40H35WE16 AD+B	40	16	35	44
213-11494	BT40H35WE20 AD+B	40	20	35	44
213-11495	BT40H35WE25 AD+B	40	25	35	44
213-11496	BT40H60WE25 AD+B	40	25	60	49
213-11497	BT40H70WE32 AD+B	40	32	70	72
213-11498	BT50H44WE16 AD+B	50	16	44	70
213-11499	BT50H44WE20 AD+B	50	20	44	70
263-11401	BT50H44WE25 AD+B	50	25	44	70
263-11402	BT50H44WE32 AD+B	50	32	44	80

Ersatzteile / Spare parts / Pieces detachees / Componenti

Type	Screw	Quantity
		
ISO 40	811-103009	2
ISO 50	811-103009	2


Code N.	Locking screw	Quantity	Locking screw	Quantity
				
213-11493	811-106006	1	-	
213-11494	811-106027	1	-	
213-11495	811-106027	1	-	
213-11496	811-106014	1	811-106027	1
213-11497	811-106009	1	811-106046	1
213-11498	811-106006	1	-	
213-11499	811-106007	1	-	
263-11401	811-106008	1	-	
263-11402	811-106009	1	-	



ZYLINDERSCHAFTAUFNAHME WELDON MIT SPRITZDÜSE
END MILL HOLDERS WELDON WITH COOLANT NOOSE FRONT FACE
MANDRINS POUR OUTIL TYPE WELDON AVEC BUSE D'ARROSAGE
MANDRINI PORTAFRESE TIPO WELDON CON SFERE DI LUBRIFICAZIONE **DIN 1835 B**



Code N.	Description	ISO	D	L	D1
263-11403	BT40H50WE06-CNFF AD+B	40	6	50	25
263-11404	BT40H50WE08-CNFF AD+B	40	8	50	28
263-11405	BT40H63WE10-CNFF AD+B	40	10	63	35
263-11406	BT40H63WE12-CNFF AD+B	40	12	63	42
263-11407	BT40H63WE14-CNFF AD+B	40	14	63	44
263-11408	BT40H63WE16-CNFF AD+B	40	16	63	48
263-11409	BT40H63WE18-CNFF AD+B	40	18	63	50
263-11410	BT40H63WE20-CNFF AD+B	40	20	63	52
263-11411	BT40H90WE25-CNFF AD+B	40	25	90	65
263-11412	BT40H100WE32-CNFF AD+B	40	32	100	72
263-11413	BT40H105WE40-CNFF AD+B	40	40	105	80
263-11414	BT50H63WE06-CNFF AD+B	50	6	63	25
263-11415	BT50H63WE08-CNFF AD+B	50	8	63	28
263-11416	BT50H70WE10-CNFF AD+B	50	10	70	35
263-11417	BT50H80WE12-CNFF AD+B	50	12	80	42
263-11418	BT50H80WE14-CNFF AD+B	50	14	80	44
263-11419	BT50H80WE16-CNFF AD+B	50	16	80	48
263-11420	BT50H80WE18-CNFF AD+B	50	18	80	50
263-11421	BT50H80WE20-CNFF AD+B	50	20	80	52
263-11422	BT50H100WE25-CNFF AD+B	50	25	100	65
263-11423	BT50H105WE32-CNFF AD+B	50	32	105	72
263-11424	BT50H120WE40-CNFF AD+B	50	40	120	80

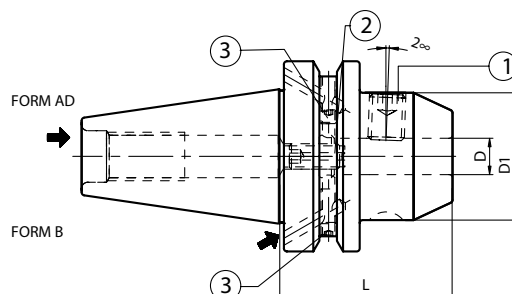
Ersatzteile / Spare parts / Pieces detachees / Componenti

Tape	Screw	Quantity
		
ISO 40	811-103009	2
ISO 50	811-103009	2

D	Locking screw	Quantity	Coolant noose
			
6	811-106001	1	PWZ1005D6x4.5
8	811-106002	1	PWZ1005D6x4.5
10	811-106004	1	PWZ1005D6x4.5
12,14	811-106005	1	PWZ1005D6x4.5
16,18	811-106006	1	PWZ1008D10x7
20	811-106007	1	PWZ1008D10x7
25	811-106008	2	PWZ1012D12x8
32	811-106009	2	PWZ1012D12x8
40	811-106009	2	PWZ1012D12x8


ZYLINDERSCHAFTAUFNAHME WHISTLE NOTCH
 END MILL HOLDERS WHISTLE NOTCH
 MANDRINS POUR OUTIL TYPE WHISTLE NOTCH
 MANDRINI PORTAFRESE TIPO WHISTLE NOTCH

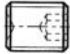
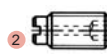
DIN 1835 E



Code N.	Description	ISO	D	L	D1
213-31412	BT40H50WN06 AD+B	40	6	50	25
213-31413	BT40H50WN08 AD+B	40	8	50	28
213-31414	BT40H63WN10 AD+B	40	10	63	35
213-31415	BT40H63WN12 AD+B	40	12	63	42
213-31416	BT40H63WN14 AD+B	40	14	63	44
213-31417	BT40H63WN16 AD+B	40	16	63	48
213-31418	BT40H63WN18 AD+B	40	18	63	50
213-31419	BT40H63WN20 AD+B	40	20	63	52
213-31420	BT40H90WN25 AD+B	40	25	90	65
213-31421	BT40H100WN32 AD+B	40	32	100	72
213-31422	BT40H105WN40 AD+B	40	40	105	80
213-31423	BT50H63WN06 AD+B	50	6	63	25
213-31424	BT50H63WN08 AD+B	50	8	63	28
213-31425	BT50H70WN10 AD+B	50	10	70	35
213-31426	BT50H80WN12 AD+B	50	12	80	42
213-31427	BT50H80WN14 AD+B	50	14	80	44
213-31428	BT50H80WN16 AD+B	50	16	80	48
213-31429	BT50H80WN18 AD+B	50	18	80	50
213-31430	BT50H80WN20 AD+B	50	20	80	52
213-31431	BT50H100WN25 AD+B	50	25	100	65
213-31432	BT50H105WN32 AD+B	50	32	105	72
213-31433	BT50H120WN40 AD+B	50	40	120	80

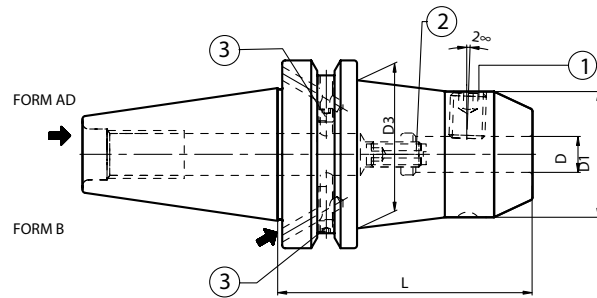
Ersatzteile / Spare parts / Pieces detachees / Componenti

Tape	Screw	Quantity
		
ISO 40	811-103009	2
ISO 50	811-103009	2

D	Locking screw	Quantity	Stop screw	Quantity
				
6	811-106001	1	811-303043	1
8	811-106002	1	811-303081	1
10	811-106004	1	811-303082	1
12,14	811-106005	1	811-303083	1
16,18	811-106006	1	811-303084	1
20	811-106007	1	811-303084	1
25	811-106008	2	811-303085	1
32	811-106009	2	811-303085	1
40	811-106009	2	811-303085	1

ZYLINDERSCHAFTAUFNAHME WHISTLE NOTCH -LANG
 END MILL HOLDERS WHISTLE NOTCH -LONG PROJECTION TYPE
 MANDRINS POUR OUTIL TYPE WHISTLE NOTCH -SERIE LONGUE
 MANDRINI PORTAFRESE TIPO WHISTLE NOTCH -SERIE LUNGA

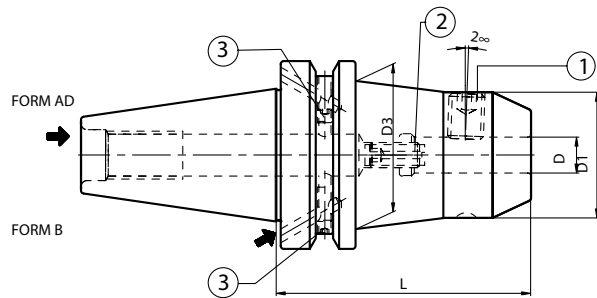
DIN 1835 E



	Code N.	Description	ISO	D	L	D1	D3
H100	213-31434	BT40H100WN06 AD+B	40	6	100	25	35
	213-31435	BT40H100WN08 AD+B	40	8	100	28	38
	213-31436	BT40H100WN10 AD+B	40	10	100	35	40
	213-31437	BT40H100WN12 AD+B	40	12	100	42	-
	213-31438	BT40H100WN14 AD+B	40	14	100	44	-
	213-31439	BT40H100WN16 AD+B	40	16	100	48	-
	213-31440	BT40H100WN18 AD+B	40	18	100	50	-
	213-31441	BT40H100WN20 AD+B	40	20	100	52	-
	213-31442	BT50H100WN06 AD+B	50	6	100	25	35
	213-31443	BT50H100WN08 AD+B	50	8	100	28	38
	213-31444	BT50H100WN10 AD+B	50	10	100	35	42
	213-31445	BT50H100WN12 AD+B	50	12	100	42	48
	213-31446	BT50H100WN14 AD+B	50	14	100	44	50
	213-31447	BT50H100WN16 AD+B	50	16	100	48	54
	213-31448	BT50H100WN18 AD+B	50	18	100	50	62
213-31449	BT50H100WN20 AD+B	50	20	100	52	66	
H160	213-31450	BT40H160WN06 AD+B	40	6	160	25	35
	213-31451	BT40H160WN08 AD+B	40	8	160	28	38
	213-31452	BT40H160WN10 AD+B	40	10	160	35	40
	213-31453	BT40H160WN12 AD+B	40	12	160	42	-
	213-31454	BT40H160WN14 AD+B	40	14	160	44	-
	213-31455	BT40H160WN16 AD+B	40	16	160	48	-
	213-31456	BT40H160WN18 AD+B	40	18	160	50	-
	213-31457	BT40H160WN20 AD+B	40	20	160	52	-
	213-31458	BT40H160WN25 AD+B	40	25	160	65	-
	213-31459	BT40H160WN32 AD+B	40	32	160	72	-
	213-31460	BT50H160WN06 AD+B	50	6	160	25	42
	213-31461	BT50H160WN08 AD+B	50	8	160	28	45
	213-31462	BT50H160WN10 AD+B	50	10	160	35	49
	213-31463	BT50H160WN12 AD+B	50	12	160	42	55
	213-31464	BT50H160WN14 AD+B	50	14	160	44	57
	213-31465	BT50H160WN16 AD+B	50	16	160	48	60
	213-31466	BT50H160WN18 AD+B	50	18	160	50	63
	213-31467	BT50H160WN20 AD+B	50	20	160	52	69
	213-31468	BT50H160WN25 AD+B	50	25	160	65	72
	213-31469	BT50H160WN32 AD+B	50	32	160	72	-


ZYLINDERSCHAFTAUFNAHME WHISTLE NOTCH -LANG
 END MILL HOLDERS WHISTLE NOTCH -LONG PROJECTION TYPE
 MANDRINS POUR OUTIL TYPE WHISTLE NOTCH -SERIE LONGUE
 MANDRINI PORTAFRESE TIPO WHISTLE NOTCH -SERIE LUNGA



DIN 1835



Code N.	Description	ISO	D	L	D1	D3
213-31470	BT40H200WN06 AD+B	40	6	200	25	38
213-31471	BT40H200WN08 AD+B	40	8	200	28	41
213-31472	BT40H200WN10 AD+B	40	10	200	35	43
213-31473	BT40H200WN12 AD+B	40	12	200	42	48
213-31474	BT40H200WN14 AD+B	40	14	200	44	48
213-31475	BT40H200WN16 AD+B	40	16	200	48	-
213-31476	BT40H200WN18 AD+B	40	18	200	50	-
213-31477	BT40H200WN20 AD+B	40	20	200	52	-
213-31478	BT40H200WN25 AD+B	40	25	200	65	-
213-31479	BT40H200WN32 AD+B	40	32	200	72	-
213-31480	BT50H200WN06 AD+B	50	6	200	25	42
213-31481	BT50H200WN08 AD+B	50	8	200	28	45
213-31482	BT50H200WN10 AD+B	50	10	200	35	49
213-31483	BT50H200WN12 AD+B	50	12	200	42	55
213-31484	BT50H200WN14 AD+B	50	14	200	44	57
213-31485	BT50H200WN16 AD+B	50	16	200	48	60
213-31486	BT50H200WN18 AD+B	50	18	200	50	63
213-31487	BT50H200WN20 AD+B	50	20	200	52	69
213-31488	BT50H200WN25 AD+B	50	25	200	65	72
213-31489	BT50H200WN32 AD+B	50	32	200	72	-

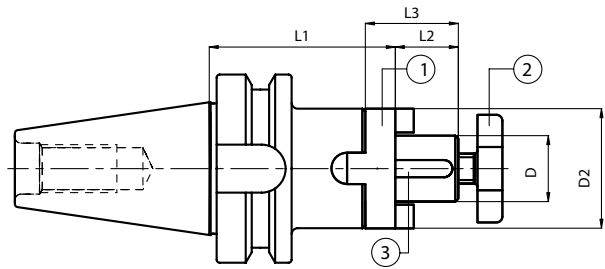
Ersatzteile / Spare parts / Pieces detachees / Componenti

Tape	Screw	Quantity
		
ISO 40	811-103009	2
ISO 50	811-103009	2

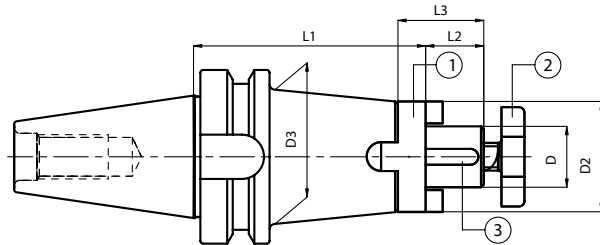
D	Locking screw	Quantity	Stop screw	Quantity
				
6	811-106001	1	811-303043	1
8	811-106002	1	811-303081	1
10	811-106004	1	811-303082	1
12,14	811-106005	1	811-303083	1
16,18	811-106006	1	811-303084	1
20	811-106007	1	811-303084	1
25	811-106008	2	811-303085	1
32	811-106009	2	811-303085	1

**KOMBI AUFSTECKFRÄSDORNE
COMBI-SHELL MILL ADAPTORS
MANDRINS PORTE-FRAISES A DOUBLE USAGE
MANDRINI PORTAFRESE COMBINATI**

DIN 6358



	Code N.	Description	ISO	D	L1	L2	L3	D2
STANDARD	216-11527	BT30H50D16C	30	16	50	17	27	32
	216-11528	BT30H50D22C	30	22	50	19	31	40
	216-11529	BT30H55D27C	30	27	55	21	33	48
	216-11501	BT40H55D16C	40	16	55	17	27	32
	216-11502	BT40H55D22C	40	22	55	19	31	40
	216-11503	BT40H55D27C	40	27	55	21	33	48
	216-11504	BT40H60D32C	40	32	60	24	38	58
	216-11505	BT40H60D40C	40	40	60	27	41	70
	216-11507	BT50H70D16C	50	16	70	17	27	32
	216-11508	BT50H70D22C	50	22	70	19	31	40
	216-11509	BT50H70D27C	50	27	70	21	33	48
	216-11510	BT50H70D32C	50	32	70	24	38	58
	216-11511	BT50H70D40C	50	40	70	27	41	70



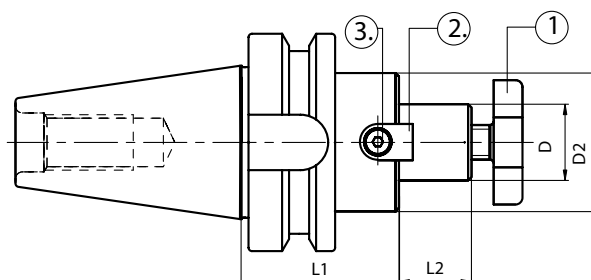
	Code N.	Description	ISO	D	L1	L2	L3	D2	D3
EXTENDED	216-11536	BT30H80D16C	30	16	80	17	27	32	-
	216-11537	BT30H80D22C	30	22	80	19	31	40	-
	216-11538	BT30H90D27C	30	27	90	21	33	48	-
	216-11517	BT40H90D16C	40	16	90	17	27	32	44
	216-11518	BT40H90D22C	40	22	90	19	31	40	-
	216-11519	BT40H90D27C	40	27	90	21	33	48	-
	216-11520	BT40H100D32C	40	32	100	24	38	58	-
	216-11521	BT40H100D40C	40	40	100	27	41	70	-
	216-11522	BT50H100D16C	50	16	100	17	27	32	44
	216-11523	BT50H100D22C	50	22	100	19	31	40	50
	216-11524	BT50H100D27C	50	27	100	21	33	48	60
	216-11525	BT50H100D32C	50	32	100	24	38	58	-
	216-11526	BT50H100D40C	50	40	100	27	41	70	-

Ersatzteile / Spare parts / Pieces detachees / Componenti

D	Ring	Screw	Key
16	814-30001	811-107003	814-201010
22	814-30002	811-107004	814-201020
27	814-30003	811-107005	814-201030
32	814-30004	811-107006	814-201040
40	814-30005	811-107007	814-201050

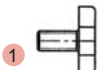

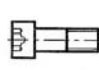
**AUFSTECKFRÄSDORNE FÜR FRÄSER MIT QUERNUT
FACE MILL HOLDERS-TENONS DRIVE
MANDRINS PORTE-FRAISE-ENTRAINEMENT PAR TENONS
MANDRINI PORTAFRESE A TRASCINAMENTO FISSO**

ISO 3937

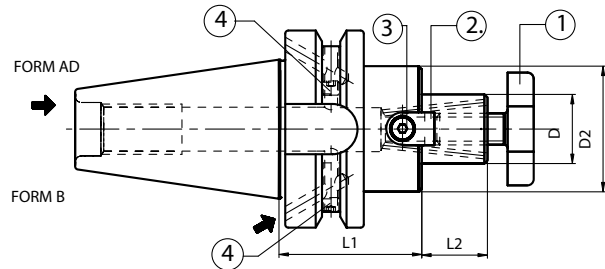


Code N.	Description	ISO	D	L1	L2	D2
216-71501	BT30H35D16F	30	16	35	17	38
216-71502	BT30H40D22F	30	22	40	19	48
216-71503	BT30H40D27F	30	27	40	21	58
216-71507	BT40H45D16F	40	16	45	17	38
216-71508	BT40H45D22F	40	22	45	19	48
216-71509	BT40H45D27F	40	27	45	21	58
216-71510	BT40H50D32F	40	32	50	24	78
216-71511	BT40H55D40F	40	40	55	27	88
216-71517	BT50H60D16F	50	16	60	17	38
216-71518	BT50H60D22F	50	22	60	19	48
216-71519	BT50H60D27F	50	27	60	21	58
216-71520	BT50H60D32F	50	32	60	24	78
216-71521	BT50H60D40F	50	40	60	27	88

Ersatzteile / Spare parts / Pieces detachees / Componenti


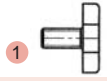

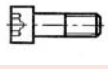
D	Screw	Tenon	Screw
			
16	811-107003	814-20228	811-101004
22	811-107004	814-20225	811-101011
27	811-107005	814-20227	811-101018
32	811-107006	814-20263	811-101029
40	811-107007	814-20271	811-101029

AUFSTECKFRÄSDORNE FÜR FRÄSER MIT QUERNUT MIT KÜHLMITTELZUFUHR
FACE MILL HOLDERS-TENONS DRIVE-WITH INTERNAL COOLANT SUPPLY
MANDRINS PORTE-FRAISE-ENTRAÎNEMENT PAR TENONS AVEC ARROSSAGE INTERNE
MANDRINI PORTAFRESE A TRASCINAMENTO FISSO CON PASSAGGIO REFRIGERANTE **ISO 3937**



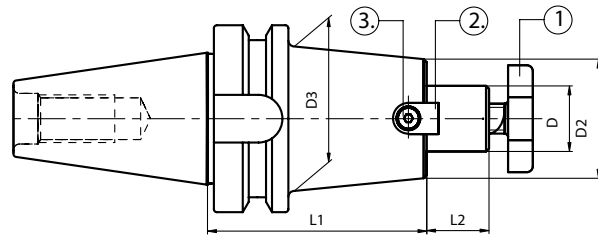
Code N.	Description	ISO	D	L1	L2	D2
216-71401	BT40H45D16F AD+B	40	16	45	17	38
216-71402	BT40H45D22F AD+B	40	22	45	19	48
216-71403	BT40H45D27F AD+B	40	27	45	21	58
216-71404	BT40H50D32F AD+B	40	32	50	24	78
216-71405	BT40H55D40F AD+B	40	40	55	27	88
216-71406	BT50H60D16F AD+B	50	16	60	17	38
216-71407	BT50H60D22F AD+B	50	22	60	19	48
216-71408	BT50H60D27F AD+B	50	27	60	21	58
216-71409	BT50H60D32F AD+B	50	32	60	24	78
216-71410	BT50H60D40F AD+B	50	40	60	27	88

Ersatzteile / Spare parts / Pieces detachees / Componenti

Tape	Screw	Quantity	D	Screw	Tenon	Screw
						
ISO 40	811-103009	2	16	811-107003	814-20228	811-101004
ISO 50	811-103009	2	22	811-107004	814-20225	811-101011
			27	811-107005	814-20227	811-101018
			32	811-107006	814-20263	811-101029
			40	811-107007	814-20271	811-101029

AUFSTECKFRÄSDORNE FÜR FRÄSER MIT QUERNUT-LANG
FACE MILL HOLDERS-TENONS DRIVE-LONG PROJECTION TYPE
MANDRINS PORTE-FRAISE-ENTRAÎNEMENT PAR TENONS-SERIE LONGUE
MANDRINI PORTAFRESE A TRASCINAMENTO FISSO-SERIE LUNGA

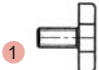

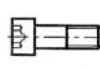
ISO 3937



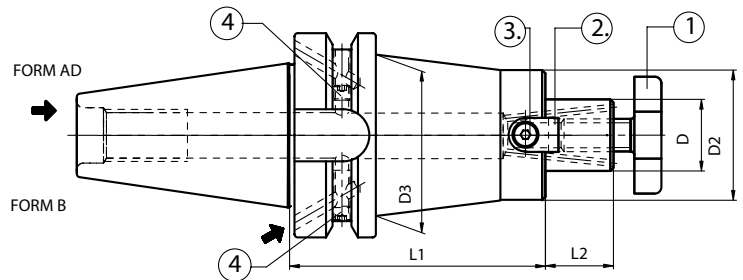
	Code N.	Description	ISO	D	L1	L2	D2	D3	
H100	216-71522	BT40H100D16F	40	16	100	17	39	-	
	216-71526	BT40H100D22F	40	22	100	19	46	48	A
	216-71530	BT40H100D22F	40	22	100	19	50	59	B
	216-71589	BT50H100D16F	50	16	100	17	39	-	
	216-71534	BT50H100D22F	50	22	100	19	46	49	A
	216-71539	BT50H100D22F	50	22	100	19	50	60	B
	216-71544	BT50H100D27F	50	27	100	21	55	78	C
	216-71590	BT50H100D32F	50	32	100	24	66	78	
H150	216-71523	BT40H150D16F	40	16	150	17	39	-	
	216-71527	BT40H150D22F	40	22	150	19	46	48	A
	216-71531	BT40H150D22F	40	22	150	19	50	59	B
	216-71591	BT50H150D16F	50	16	150	17	39	-	
	216-71535	BT50H150D22F	50	22	150	19	46	49	A
	216-71540	BT50H150D22F	50	22	150	19	50	60	B
	216-71545	BT50H150D27F	50	27	150	21	55	78	C
	216-71592	BT50H150D32F	50	32	150	24	66	78	
H200	216-71524	BT40H200D16F	40	16	200	17	39	-	
	216-71528	BT40H200D22F	40	22	200	19	46	48	A
	216-71532	BT40H200D22F	40	22	200	19	50	59	B
	216-71593	BT50H200D16F	50	16	200	17	39	-	
	216-71536	BT50H200D22F	50	22	200	19	46	49	A
	216-71541	BT50H200D22F	50	22	200	19	50	60	B
	216-71546	BT50H200D27F	50	27	200	21	55	78	C
	216-71594	BT50H200D32F	50	32	200	24	66	78	

A/Für Fräser D50/Suitable for milling cutters D50/ Adaptes pour fraises D50/ Adatti per frese D50
 B/Für Fräser D63/Suitable for milling cutters D63/ Adaptes pour fraises D63/ Adatti per frese D63
 C/Für Fräser D80/Suitable for milling cutters D80/ Adaptes pour fraises D80/ Adatti per frese D80

Ersatzteile / Spare parts / Pieces detachees / Componenti


D	Screw	Tenon	Screw
			
16	811-107003	814-20228	811-101004
22/46	811-107004	814-20225	811-101011
22/50	811-107004	814-20226	811-101012
27	811-107005	814-20227	811-101017
32	811-107006	814-20229	811-101029

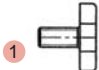

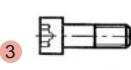
AUFSTECKFRÄSDORNE FÜR FRÄSER MIT QUERNUT MIT KÜHLMITTELZUFUHR-LANG
FACE MILL HOLDERS-TENONS DRIVE-WITH INTERNAL COOLANT SUPPLY-LONG
MANDRINS PORTE-FRAISE-ENTRAÎNEMENT PAR TENONS AVEC ARROSSAGE INTERNE-LONGUE
MANDRINI PORTAFRESE A TRASCINAMENTO FISSO CON PASSAGGIO REFRIGERANTE-LUNGA **ISO 3937**



Code N.	Description	ISO	D	L1	L2	D2	D3
216-71411	BT40H100D16F AD+B	40	16	100	17	32	40
216-71412	BT40H100D22F AD+B	40	22	100	19	40	48
216-71413	BT40H100D27F AD+B	40	27	100	21	48	-
216-71414	BT40H100D32F AD+B	40	32	100	24	58	-
216-71415	BT50H100D16F AD+B	50	16	100	17	32	40
216-71416	BT50H100D22F AD+B	50	22	100	19	40	52
216-71417	BT50H100D27F AD+B	50	27	100	21	48	55
216-71418	BT50H100D32F AD+B	50	32	100	24	58	65
216-71419	BT50H100D40F AD+B	50	40	100	27	70	-

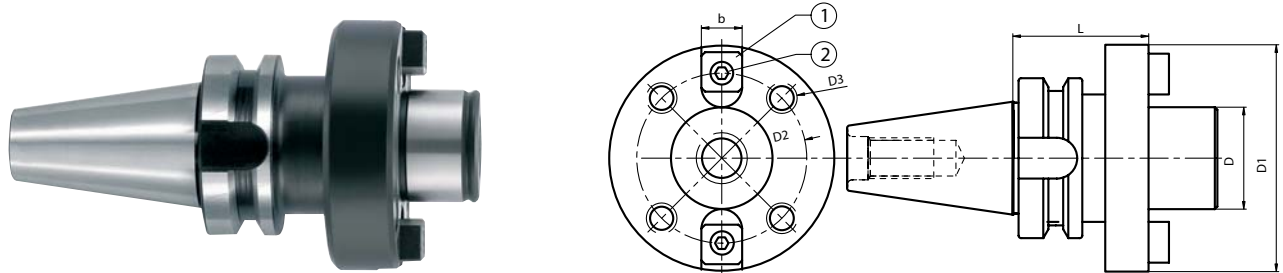
Ersatzteile / Spare parts / Pieces detachees / Componenti

Tappe	Screw	Quantity
		
ISO 40	811-103009	2
ISO 50	811-103009	2

D	Screw	Tenon	Screw
			
16	811-107003	814-20214	811-101003
22	811-107004	814-20215	811-101010
27	811-107005	814-20216	811-101017
32	811-107006	814-20217	811-101027
40	811-107007	814-20218	811-101028

AUFSTECKFRÄSERDORNE FÜR MESSERKÖPFE
FACE MILL HOLDER FOR FACE MILLING CUTTERS
MANDRINS PORTE-FRAISE POUR FRAISES A SURFACER
MANDRINI PORTAFRESE PER FRESE A SPIANARE

DIN 6357



Code N.	Description	ISO	D	L	D1	D2	D3	b
216-21501	BT40H60D40	40	40	60	89	66.7	M12	15.9
216-21502	BT50H70D40	50	40	70	89	66.7	M12	15.9
216-21503	BT50H80D60	50	60	80	129	101.6	M16	25.4

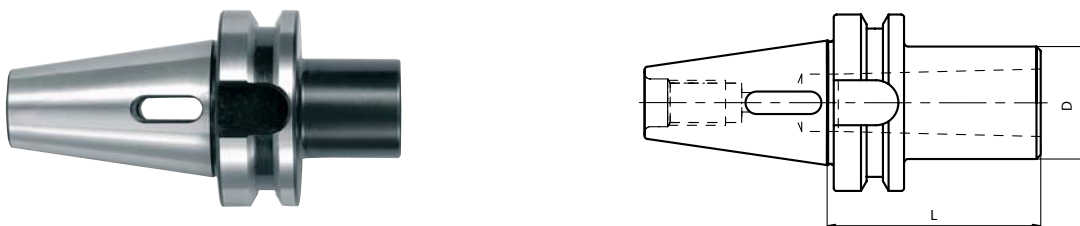
Ersatzteile / Spare parts / Pieces detachees / Componenti

D	Tenon	Screw
40	814-202080	811-101028
60	814-202120	811-101063

MAS 403/BT A

ZWISCHENHÜLSEN FÜR MORSEKEGEL MIT AUSTREIBBLAPPEN
MORSE TAPER ADAPTORS FOR DRILLS
DOUILLES POUR CONE MORSE A TENON
MANDRINI PORTAPUNTE ATTACCO CONO MORSE

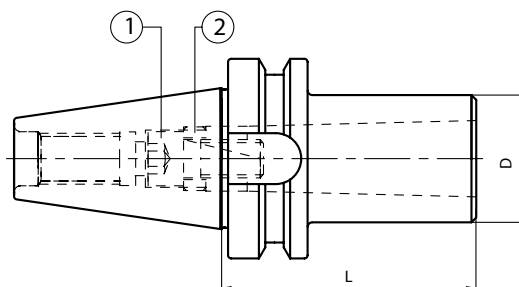
DIN 228-2 FORM D



Code N.	Description	ISO	MORSE	D	L
212-41512	BT30H50CM1P	30	1	25	50
212-41513	BT30H60CM2P	30	2	32	60
212-41518	BT30H79CM3P	30	3	40	79
212-41501	BT40H50CM1P	40	1	25	50
212-41502	BT40H50CM2P	40	2	32	50
212-41503	BT40H70CM3P	40	3	40	70
212-41504	BT40H95CM4P	40	4	48	95
212-41519	BT50H45CM1P	50	1	25	45
212-41505	BT50H60CM2P	50	2	32	60
212-41506	BT50H65CM3P	50	3	40	65
212-41507	BT50H70CM4P	50	4	48	70
212-41508	BT50H105CM5P	50	5	63	105

ZWISCHENHÜLSEN FÜR MORSEKEGEL MIT ANZUGSGEWINDE
MORSE TAPER ADAPTER WITH TREAD
DOUILLES POUR CONE MORSE AVEC TARAUDAGE
MANDRINI PORTAFRESE ATTACCO CONO MORSE

DIN 228-2 FORM C



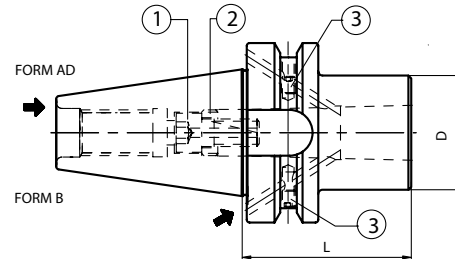
Code N.	Description	ISO	MORSE	D	L
212-21512	BT30H50CM1F	30	1	25	50
212-21513	BT30H60CM2F	30	2	32	60
212-21518	BT30H80CM3F	30	3	40	80
212-21501	BT40H50CM1F	40	1	25	50
212-21502	BT40H50CM2F	40	2	32	50
212-21503	BT40H70CM3F	40	3	40	70
212-21504	BT40H95CM4F	40	4	48	95
212-21519	BT50H45CM1F	50	1	25	45
212-21505	BT50H60CM2F	50	2	32	60
212-21506	BT50H65CM3F	50	3	40	65
212-21507	BT50H90CM4F	50	4	48	90
212-21508	BT50H118CM5F	50	5	63	118

Ersatzteile / Spare parts / Pieces detachees / Componenti

BT/MORSE	Screw (BTA)	Screw (BTAD/B)	Ring
30/1	811-111009	-	811-302037
30/2	811-111007	-	811-302031
30/3	811-111008	-	811-302032
40/1	811-101029	-	811-302030
40/2	811-111007	811-111038	811-302031
40/3	811-111008	811-401098	811-302032
40/4	811-111005	811-401083	811-302036
50/1	811-101031	-	811-302030
50/2	811-101054	811-401084	811-302032
50/3	811-101065	811-401085	811-302032
50/4	811-401037	811-401086	811-302036
50/5	811-101092	811-401087	811-302034


ZWISCHENHÜLSEN FÜR MORSEKEGEL MIT ANZUGSGEWINDE
MORSE TAPER ADAPTER WITH TREAD
DOUILLES POUR CONE MORSE AVEC TARAUDAGE
MANDRINI PORTAFRESE ATTACCO CONO MORSE

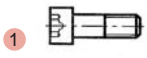
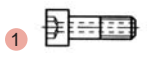

DIN 228-2 FORM C



Code N.	Description	ISO	MORSE	D	L
212-31405	BT40H50CM2F AD+B	40	2	32	50
212-31406	BT40H75CM3F AD+B	40	3	40	75
212-31407	BT40H95CM4F AD+B	40	4	48	95
212-31408	BT50H60CM2F AD+B	50	2	32	60
212-31409	BT50H65CM3F AD+B	50	3	40	65
212-31410	BT50H95CM4F AD+B	50	4	48	95
212-31411	BT50H120CM5F AD+B	50	5	63	120

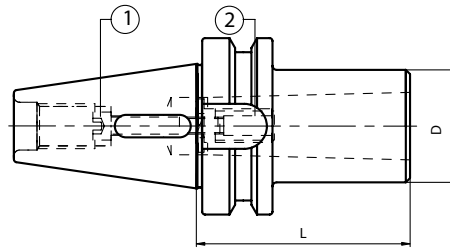
Ersatzteile / Spare parts / Pieces detachees / Componenti

Tape/Morse	Screw	Quantity
		
40/2	811-103009	2
40/3;4	811-103010	2
50/2;3;4	811-103009	2
50/5	811-103006	2

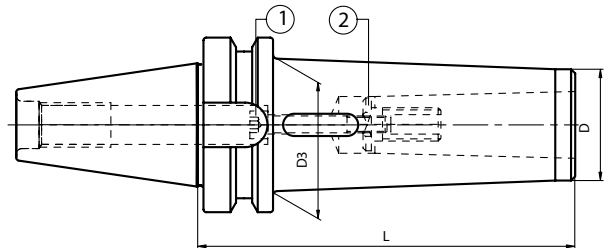
BT/MORSE	Screw (BTA)	Screw (BTAD/B)	Ring
			
30/1	811-111009	-	811-302037
30/2	811-111007	-	811-302031
30/3	811-111008	-	811-302032
40/1	811-101029	-	811-302030
40/2	811-111007	811-111038	811-302031
40/3	811-111008	811-401098	811-302032
40/4	811-111005	811-401083	811-302036
50/1	811-101031	-	811-302030
50/2	811-101054	811-401084	811-302032
50/3	811-101065	811-401085	811-302032
50/4	811-401037	811-401086	811-302036
50/5	811-101092	811-401087	811-302034

ZWISCHENHÜLSEN FÜR MORSEKEGEL MIT AUSTREIBBLAPPEN ODER ANZUGSGEWINDE
 MORSE TAPER ADAPTORS FOR DRILLS AND MILLS
 DOUILLES POUR CONE MORSE A TENON ET AVEC TARAUDAGE
 MANDRINI PORTAPUNTE-PORTAFRESE ATTACCO CONO MORSE

DIN 228-2 FORM C/D

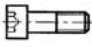





	Code N.	Description	ISO	MORSE	D	L
STANDARD	212-61512	BT30H52CM1P/F	30	1	25	52
	212-61513	BT30H63CM2P/F	30	2	32	63
	212-61514	BT30H90CM3P/F	30	3	40	90
	212-61518	BT40H50CM1P/F	40	1	25	50
	212-61519	BT40H60CM2P/F	40	2	32	60
	212-61520	BT40H76CM3P/F	40	3	40	76
	212-61522	BT50H45CM1P/F	50	1	25	45
	212-61523	BT50H60CM2P/F	50	2	32	60
	212-61524	BT50H65CM3P/F	50	3	40	65
	212-61525	BT50H95CM4P/F	50	4	48	95
	212-61526	BT50H120CM5P/F	50	5	63	120

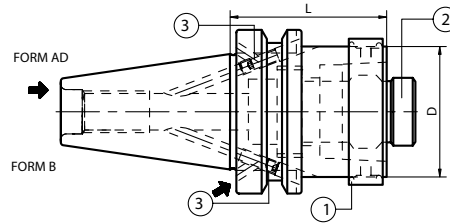


	Code N.	Description	ISO	MORSE	D	D3	L
EXTENDED	212-61527	BT30H110CM1P/F	30	1	18	25	110
	212-61528	BT30H120CM2P/F	30	2	25	32	120
	212-61529	BT30H140CM3P/F	30	3	33	40	140
	212-61501	BT40H115CM1P/F	40	1	18	25	115
	212-61502	BT40H125CM2P/F	40	2	25	32	125
	212-61503	BT40H140CM3P/F	40	3	33	40	140
	212-61505	BT50H120CM1P/F	50	1	18	25	120
	212-61506	BT50H140CM2P/F	50	2	25	32	140
	212-61507	BT50H150CM3P/F	50	3	33	40	150
	212-61508	BT50H180CM4P/F	50	4	40	48	180
	212-61509	BT50H220CM5P/F	50	5	55	63	220

Ersatzteile / Spare parts / Pieces detachees / Componenti

	Code N.	Screw	Ring		Code N.	Screw	Ring
STANDARD				EXTENDED			
	212-61512	811-111026	-		212-61527	811-101034	-
	212-61513	811-111026	811-302010		212-61528	811-101035	811-302010
	212-61514	811-101035	811-302006		212-61529	811-101037	811-302006
	212-61518	811-101033	-		212-61501	811-101037	-
	212-61519	811-401018	-		212-61502	811-101061	-
	212-61520	811-101034	811-302006		212-61503	811-101081	811-302006
	212-61522	811-101033	-		212-61505	811-101077	-
	212-61523	811-101057	-		212-61506	811-101078	-
	212-61524	811-101071	-		212-61507	811-101079	-
	212-61525	811-401016	-		212-61508	811-401030	-
	212-61526	811-101071	811-302008		212-61509	811-101080	811-302008

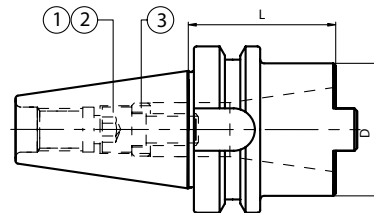
ZWISCHENHÜLSEN BT X HSK – HAND SPANNSYSTEM
TAPER ADAPTER BT X HSK – MANUAL CLAMPING
DOUILLES INTERMEDIAIRES BT X HSK – SERRAGE MANUEL
MANDRINI RIDUZIONE DA BT A HSK – CHIUSURA MANUALE



Code N.	Description	ISO	HSK	D	L	¹ Ring (complete)	² Locking unit (complete)
212-91401	BT40H60HSK50 AD+B	40	50	50	60	H50A-AN	H50A-UBL
212-91402	BT40H80HSK63 AD+B	40	63	63	80	H63A-AN	H63A-UBL
212-91403	BT50H60HSK50 AD+B	50	50	50	60	H50A-AN	H50A-UBL
212-91404	BT50H60HSK63 AD+B	50	63	63	60	H63A-AN	H63A-UBL

MAS 403/BT A

ZWISCHENHÜLSEN BT X SK
ISO TAPER ADAPTORS
DOUILLES INTERMEDIAIRES BT X SA
MANDRINI RIDUZIONE E PROLUNGE BT/ ISO



Code N.	Description	ISO	ISO	D	L
212-11504	BT40H63ISO30/TC30	40	30	52	63
212-11508	BT40H100ISO40/TC40	40	40	68	100
212-11507	BT50H70ISO40/TC40	50	40	78	70
212-11509	BT50H120ISO50/TC50	50	50	100	120

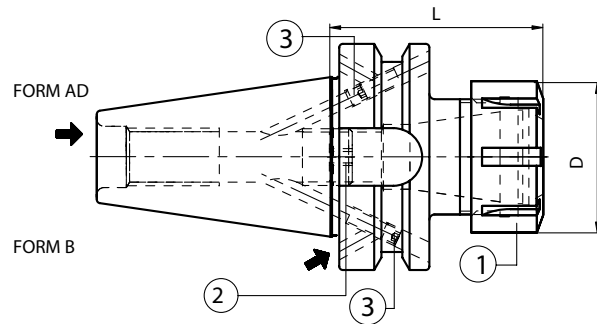
Ersatzteile / Spare parts / Pieces detachees / Componenti

BT/ISO	Screw (ISO)	Screw (TC)	Ring	Wrench
40/30	811-111008	811-111046	811-302032	816-202060
40/40	811-111005	811-111023	811-302036	816-202070
50/40	811-111005	811-111023	811-302036	816-202070
50/50	811-401052	811-401135	811-302047	816-202090

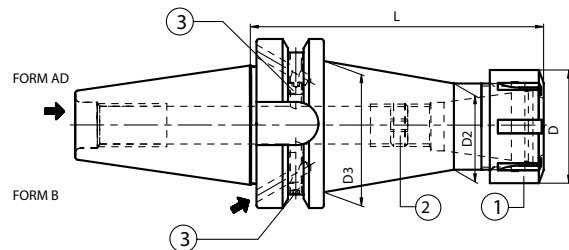
Schraubenschlüssel und Verschlußschraube für DIN69871/MAS BT/DIN2080 werden mitgeliefert
 Supplied with a wrench and a screw DIN69871/MAS BT/DIN2080
 Livré avec une clé et une vis de serrage DIN69871/MAS BT/DIN2080
 In dotazione chiave e vite per chiusura DIN69871/MAS BT/DIN2080

**SPANNZANGENFUTTER ER TYP
ER COLLET CHUCK
MANDRINS A PINCES TYPE ER
MANDRINI PORTAPINZA TIPO ER**

DIN 6499



	Code N.	Description	ISO	ER	D	L
STANDARD	*214-31511	BT30H55ER16	30	16	32	55
	*214-31512	BT30H55ER25	30	25	42	55
	*214-31525	BT30H60ER32	30	32	50	60
	214-31447	BT40H70ER16 AD+B	40	16	32	70
	214-31422	BT40H70ER25 AD+B	40	25	42	70
	214-31423	BT40H70ER32 AD+B	40	32	50	70
	214-31424	BT40H70ER40 AD+B	40	40	63	70
	214-31429	BT50H80ER25 AD+B	50	25	42	80
	214-31430	BT50H80ER32 AD+B	50	32	50	80
	214-31431	BT50H80ER40 AD+B	50	40	63	80

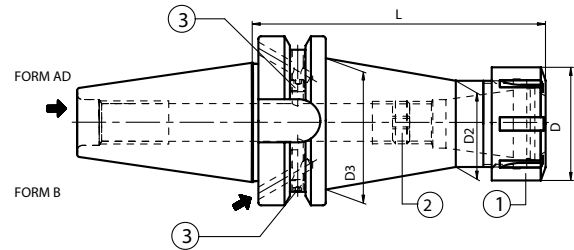


	Code N.	Description	ISO	ER	D	L	D2	D3
EXTENDED H100	*214-31520	BT30H100ER16	30	16	32	100	22	24
	*214-31538	BT30H100ER25	30	25	42	100	32	40
	214-31448	BT40H100ER16 AD+B	40	16	32	100	22	32
	214-31439	BT40H100ER25 AD+B	40	25	42	100	32	42
	214-31440	BT40H100ER32 AD+B	40	32	50	100	40	50
	214-31449	BT40H100ER40 AD+B	40	40	63	100	50	50
	214-31450	BT50H100ER16 AD+B	50	16	32	100	22	32
	214-31438	BT50H100ER25 AD+B	50	25	42	100	32	42
	214-31434	BT50H100ER32 AD+B	50	32	50	100	40	50
	214-31436	BT50H100ER40 AD+B	50	40	63	100	50	63

*Ausführung Form AD
*Execution form AD
*Forme AD
*Forma AD


SPANNZANGENFUTTER ER TYP - LANG
ER COLLET CHUCK - LONG
MANDRINS A PINCES TYPE ER - SERIE LONGUE
MANDRINI PORTAPINZA TIPO ER - SERIE LUNGA


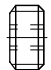
DIN 6499



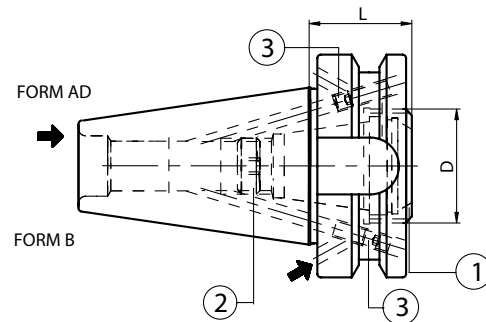
	Code N.	Description	ISO	ER	D	L	D2	D3	
EXTENDED	H 160	214-31442	BT40H160ER16 AD+B	40	16	32	160	22	32
		214-31432	BT40H160ER25 AD+B	40	25	42	160	32	42
		214-31433	BT40H160ER32 AD+B	40	32	50	160	40	50
		214-31451	BT40H160ER40 AD+B	40	40	63	160	50	50
		214-31452	BT50H160ER16 AD+B	50	16	32	160	22	32
		214-31453	BT50H160ER25 AD+B	50	25	42	160	32	42
		214-31435	BT50H160ER32 AD+B	50	32	50	160	40	50
	214-31437	BT50H160ER40 AD+B	50	40	63	160	50	63	
	H 200	214-31454	BT40H200ER16 AD+B	40	16	32	200	22	32
		214-31455	BT40H200ER25 AD+B	40	25	42	200	32	42
		214-31456	BT40H200ER32 AD+B	40	32	50	200	40	50
		214-31457	BT40H200ER40 AD+B	40	40	63	200	50	50
		214-31458	BT50H200ER16 AD+B	50	16	32	200	22	32
		214-31459	BT50H200ER25 AD+B	50	25	42	200	32	42
214-31460		BT50H200ER32 AD+B	50	32	50	200	40	50	
214-31461	BT50H200ER40 AD+B	50	40	63	200	50	63		

Ersatzteile / Spare parts / Pieces detachees / Componenti

Tape	Screw	Quantity
		
ISO 40	811-103009	2
ISO 50	811-103009	2

ER	Nut	Stop screw
		
16	812-203005	811-303119
25	812-203001	811-303121
32	812-203002	811-303118
40	812-203003	811-303122

SPANNZANGENFUTTER ER TYP EXTRAKURZ
ER COLLET CHUCK WITH INSIDE NUT
MANDRINS COURTS A PINCES TYPE ER
MANDRINI PORTAPINZA TIPO ER EXTRACORTI



Code N.	Description	ISO	ER	D	L
214-31462	BT40H29ER25A-AD+B	40	25A	32	29
214-31571	BT40H29ER32A	40	32A	40	29
214-31463	BT50H40ER32A-AD+B	50	32A	40	40

*Ausführung Form AD
 *Execution form AD
 *Forme AD
 *Forma AD

Ersatzteile / Spare parts / Pieces detachees / Componenti

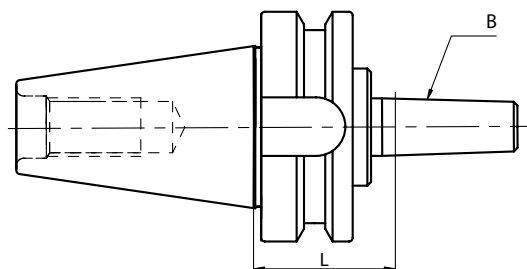
Tape	Screw	Quantity
ISO 40	811-103009	2
ISO 50	811-103009	2

ER	Nut	Stop screw
25A	812-203057	811-303121
32A	812-203032	811-303118

MAS 403/BT A

BOHRFUTTERAUFNAHMEN
ABORS FOR DRILL CHUCKS
ARBRES POUR MANDRINS DE PERCAGE
ATTACCO PER MANDRINI PORTAPUNTE

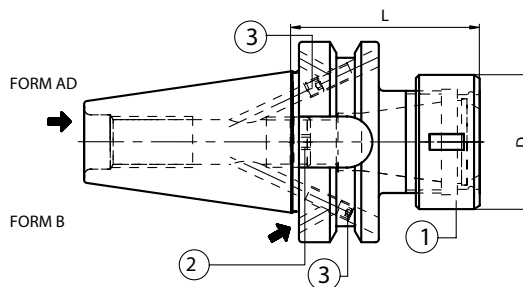
DIN 238



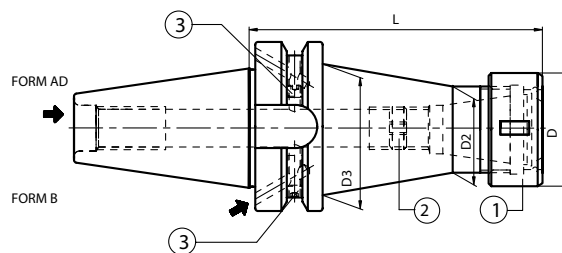
Code N.	Description	ISO	B	L
216-31510	BT30H40B12	30	12	40
216-31511	BT30H40B16	30	16	40
216-31502	BT40H40B16	40	16	40
216-31503	BT40H40B18	40	18	40
216-31505	BT50H50B16	50	16	50
216-31506	BT50H50B18	50	18	50

**SPANNZANGENFUTTER EOC TYP
EOC COLLET CHUCK
MANDRINS A PINCES TYPE EOC
MANDRINI PORTAPINZA TIPO EOC**

DIN 6388





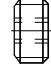
	Code N.	Description	ISO	D	L	D1
STANDARD	214-11401	BT40H70EOC16 AD+B	40	16	43	70
	214-11402	BT40H70EOC25 AD+B	40	25	60	70
	214-11403	BT50H85EOC25 AD+B	50	25	60	85
	214-11404	BT50H90EOC32 AD+B	50	32	72	90



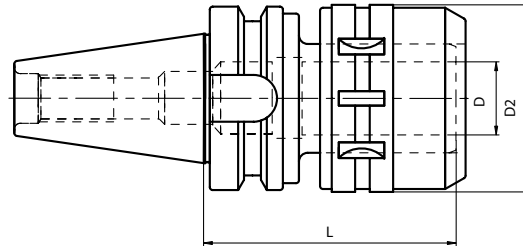
	Code N.	Description	ISO	EOC	D	L	D2	D3
EXTENDED	214-11405	BT40H130EOC16 AD+B	40	16	43	130	33	42
	214-11406	BT40H130EOC25 AD+B	40	25	60	130	48	48
	214-11408	BT50H130EOC25 AD+B	50	25	60	130	48	48
	214-11409	BT50H130EOC32 AD+B	50	32	72	130	60	60

Ersatzteile / Spare parts / Pieces detachees / Componenti

Tape	Screw	Quantity
		
ISO 40	811-103009	2
ISO 50	811-103009	2

EOC	Nut	Stop screw
		
16	812-202050	811-303121
25	812-202070	811-303123
32	812-202080	811-303123

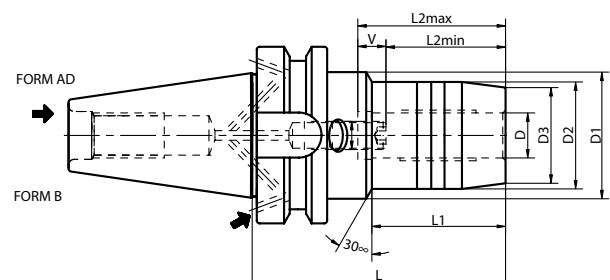
**KRAFTSPANNFUTTER
MILLING CHUCK
MANDRINS A FORT SERRAGE
MANDRINI A FORTE SERRAGGIO**



Code N.	Description	ISO	D	D2	L
214-01501	BT40H105C20	40	20	54	105
214-01502	BT40H105C32	40	32	72	105
214-01503	BT40H135C32	40	32	72	135
214-01504	BT50H105C20	50	20	54	105
214-01505	BT50H105C32	50	32	72	105
214-01506	BT50H135C32	50	32	72	135

MAS 403/BT AD/B

**HYDRO-DEHNSPANNFUTTER FÜR WERKZEUGE MIT ZYLINDERSCHAFT
HYDRO-EXPANSION CHUCKS FOR TOOLS WITH CYLINDRICAL SHANK
MANDRINS HYDRO-EXPANSIBLES POUR OUTIL A QUEUE CYLINDRIQUE
MANDRINI IDRAULICI PER UTENSILI ATTACCO CILINDRICO**

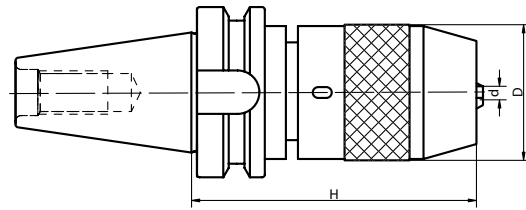


Code N.	Description	ISO	D	D1	D2	D3	L	L1	L2 min	L2 max	V	M
252-11405	BT40H90G06-WO AD+B	40	6	45	26	22	90	43	27.5	37.5	10	M5
252-11406	BT40H90G08-WO AD+B	40	8	45	28	24	90	44.5	27.5	37.5	10	M6
252-11407	BT40H90G10-WO AD+B	40	10	45	30	26	90	44.5	32.5	42.5	10	M8x1
252-11401	BT40H90G12-WO AD+B	40	12	45	32	28	90	44.5	37.5	47.5	10	M10x1
252-11408	BT40H90G16-WO AD+B	40	16	45	38	34	90	47.5	42.5	52.5	10	M10x1
252-11402	BT40H90G20-WO AD+B	40	20	45	42	38	90	47.5	42.5	52.5	10	M10x1
252-11409	BT40H83G32-WO AD+B	40	32	80	63	60	83	25.5	55	65	10	M10x1
252-11403	BT50H90G20-WO AD+B	50	20	45	42	38	90	47.5	42.5	52.5	10	M10x1
252-11404	BT50H90G32-WO AD+B	50	32	-	72	56	90	-	55	65	10	M16x1

Suitable only for clamping the tools with straight shank DIN 1835A.
Do not clamp end mills with shank whistle-notch (DIN 1835E).
Do not carry out clamping action without the tool.

Adatti solo per utensili con gambo cilindrico DIN 1835A.
Non bloccare le frese con attacco whistle-notch (DIN 1835E).
Evitare la chiusura del mandrino, senza l'utensile nel foro.

**NC-BOHRFUTTER
UNIVERSAL DRILL CHUCKS
MANDRINS UNIVERSELS DE PERCAGE
MANDRINI PORTAPUNTE INTEGRALI**



Code N.	Description	ISO	H	D	Clamping capacity	Wrench
252-11501	BT40H105R1-13	40	105	50	1-13	816-152001
252-11502	BT40H115R3-16	40	115	57	3-16	816-152002
252-11503	BT50H105R1-13	50	105	50	1-13	816-152001
252-11504	BT50H115R3-16	50	115	57	3-16	816-152002

RUNOUT ACCURACY 0.04 MM T.I.R.

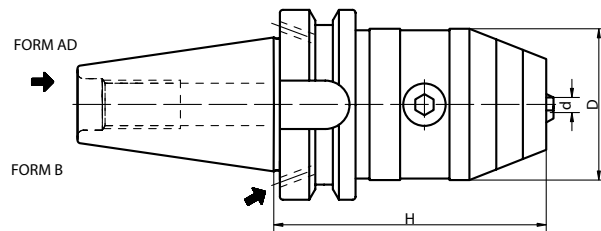
Supplied with spanner wrench to allow the application of supplementary gripping torque.
DO NOT USE IN REVOLUTION IN COUNTER-CLOCKWISE DIRECTION.

PRECISIONE DI ROTAZIONE 0.04 MM

Per incrementare la forza di serraggio i mandrini sono forniti con chiave di bloccaggio.
NON DEVONO ESSERE USATI PER LAVORAZIONI CON ROTAZIONE A SINISTRA.

MAS 403/BT AD/B

**NC-BOHRFUTTER FÜR RECHTS- UND LINKSLAUF
NC DRILL CHUCKS FOR LEFT AND RIGHT ROTATION
MANDRIN DE PERCAGE CNC POUR ROTATION GAUCHE-DROITE
MANDRINI PORTAPUNTE INTEGRALI PER ROTAZIONE DESTRA E SINISTRA**



Code N.	Description	ISO	H	D	Clamping capacity	Wrench
252-11410	BT40H90R1-13X-AD/B	40	90	50	1-13	816-111024
252-11411	BT40H95R3-16X-AD/B	40	95	57	3-16	816-111025
252-11412	BT50H90R1-13X-AD/B	50	90	50	1-13	816-111024
252-11413	BT50H95R3-16X-AD/B	50	95	57	3-16	816-111025

RUNOUT ACCURACY 0.03 MM T.I.R.

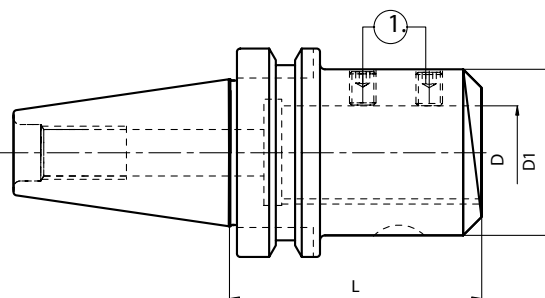
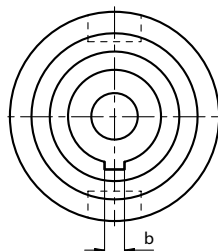
Suitable for right and left rotation up to 7000 rpm. ○ With fine balancing and extra price, they can run up to 15000rpm.

PRECISIONE DI ROTAZIONE 0.03 MM.

Adatti per rotazione sia destra che sinistra, con velocità max di 7000 g/min, o Velocità fino a 15000 g/min. sono ottenibili previa bilanciatura fine e con aumento di prezzo.

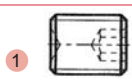
**STELLHÜSENSAUFNAHMEN
MASTER SHANKS FOR ADJUSTABLE ADAPTORS
MANDRINS POUR DOUILLES REGLAGE
MANDRINI PER ASTUCCI REGISTRABILI**

DIN 6327



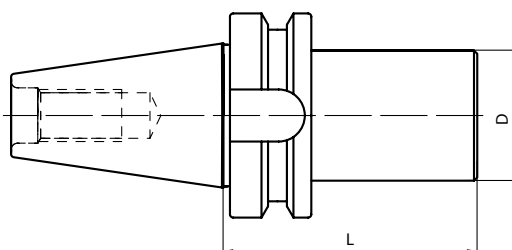
Code N.	Description	ISO	D	D1	L	b
211-11501	BT40H70D28TR	40	28	50	70	6
211-11502	BT40H120D36TR	40	36	63	120	8
211-11503	BT50H100D28TR	50	28	50	100	6
211-11504	BT50H100D36TR	50	36	63	100	8

Ersatzteile / Spare parts / Pieces detachees / Componenti

D	Screw
	
28	811-102027
36	811-102036

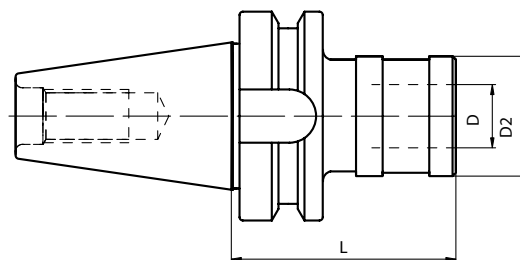
MAS 403/BT A

**ROHLINGE
BLANK TOOLHOLDER
EBAUCHE
MANDRINI SEMILAVORATI A STELO TENERO**



Code N.	Description	ISO	D	L
217-41502	BT40H160D40.5SM	40	40.5	160
217-41503	BT40H160D63.5SM	40	63.5	160
217-41504	BT40H250D63.5SM	40	63.5	250
217-41505	BT50H160D80SM	50	80	160
217-41506	BT50H200D80SM	50	80	200
217-41507	BT50H300D80SM	50	80	300

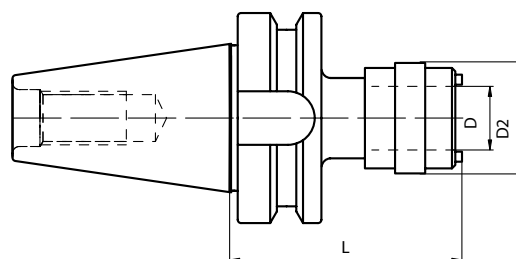
GEWINDESCHNEID-SCHNELLWECHSELFUTTER MIT LÄNGENAUSGLEICH
TENSION AND COMPRESSION TAPPING HEAD
MANDRINS DE TARAUDAGE A CHANGEMENT RAPIDE A DOUBLE USAGE
MASCHIATORI A DOPPIA COMPENSAZIONE



Code N.	Description	ISO	SIZE	Top range	PRESS.	EXT.	D	D2	L
M-3310	BT40H67GR1.DC	40	1	M3-M12	9	9	19	38	67
M-3410	BT40H93GR2.DC	40	2	M6-M20	15	15	31	53	93
M-3510	BT40H138GR3.DC	40	3	M14-M33	24	24	48	78	138
M-3320	BT50H81GR1.DC	50	1	M3-M12	9	9	19	38	80
M-3430	BT50H102GR2.DC	50	2	M6-M20	15	15	31	53	102
M-3530	BT50H135GR3.DC	50	3	M14-M33	24	24	48	78	135

MAS 403/BT A

GEWINDESCHNEID-SCHNELLWECHSELFUTTER OHNE LÄNGENAUSGLEICH
SOLID TAPPING HEAD
MANDRINS DE TARAUDAGE A CHANGEMENT RAPIDE SANS COMPENSATION
MASCHIATORI RIGIDI SENZA COMPENSAZIONE



Code N.	Description	ISO	SIZE	Top range	D	D2	L
M6010	BT40H67GR1.SC	40	1	M3-M12	19	33	67
M6020	BT40H90GR2.SC	40	2	M6-M20	31	50	90